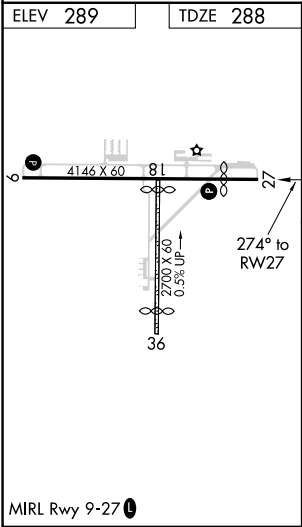
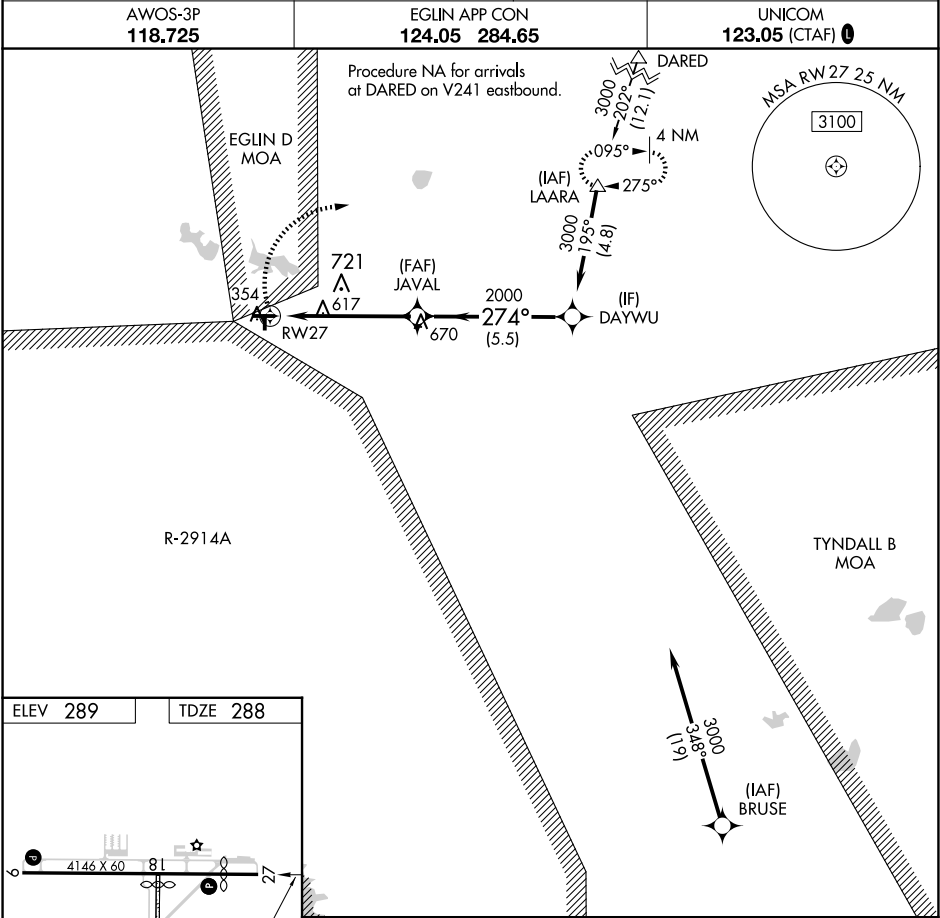


WAAS CH 97725 W27A	APP CRS 274°	Rwy Idg TDZE 288 Apt Elev 289
--	------------------------	---

RNAV (GPS) RWY 27
DEFUNIAK SPRINGS (54J)

RNP APCH. Circling NA to Rwy 18 and 36. Circling Rwy 9 NA at night. Rwy 27 helicopter visibility reduction below 3/4 SM NA.	MISSED APPROACH: Climbing right turn to 3000 direct LAARA and hold.
---	--



3000 LAARA		Visual Segment - Obstacles.		DAYWU	
1.7 NM to RW27		JAVAL		3000	
RW27		2000		274°	
1.7 NM		3.6 NM		5.5 NM	
CATEGORY	A	B	C	D	
LP MDA	880-1	592 (600-1)		NA	
LNAV MDA	880-1	592 (600-1)		NA	
CIRCLING	880-1 591 (600-1)	920-1 631 (700-1)		NA	

SE-3, 07 AUG 2025 to 04 SEP 2025

SE-3, 07 AUG 2025 to 04 SEP 2025