

APP CRS
298°

Rwy Idg
TDZE
Apt Elev

N/A
N/A
34

RNAV (GPS)-A
LEE (ANP)

RNP APCH - GPS.

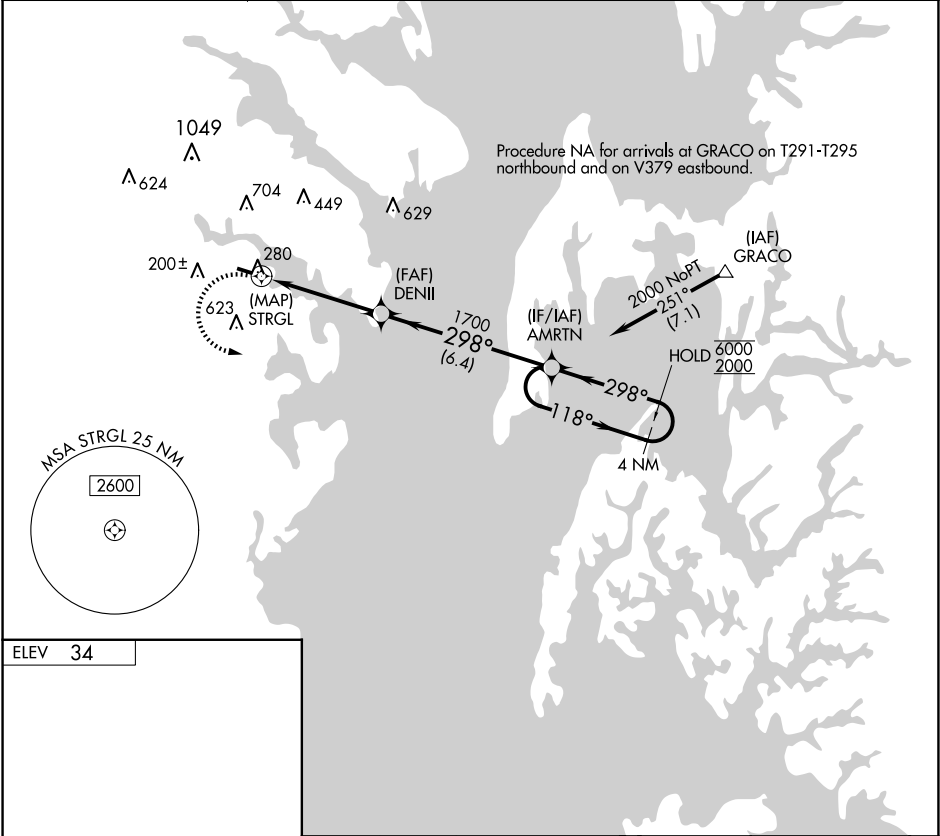
▼

▲ NA

Procedure NA at night. Rwy 12, and 30 helicopter visibility reduction below 1 SM NA. Use BWI altimeter setting.

MISSED APPROACH: Climbing left turn to 2000 direct AMRTN and hold.

BWI ASOS 115.1 127.8	POTOMAC APP CON 119.7 290.475	CTAF 122.9 0
-------------------------	----------------------------------	-----------------



ELEV 34

LIRL Rwy 12-30 0

2000 AMRTN

4 NM Holding Pattern

STRGL

DENII

AMRTN

1700

118°

298°

6000

2000

3.06°

TCH 40

4.5 NM

6.4 NM

CATEGORY	A	B	C	D
CIRCLING	660-1	626 (700-1)	NA	NA

NE-3, 07 AUG 2025 to 04 SEP 2025

NE-3, 07 AUG 2025 to 04 SEP 2025