

LIVE OAK, FLORIDA

AL-9758 (FAA)

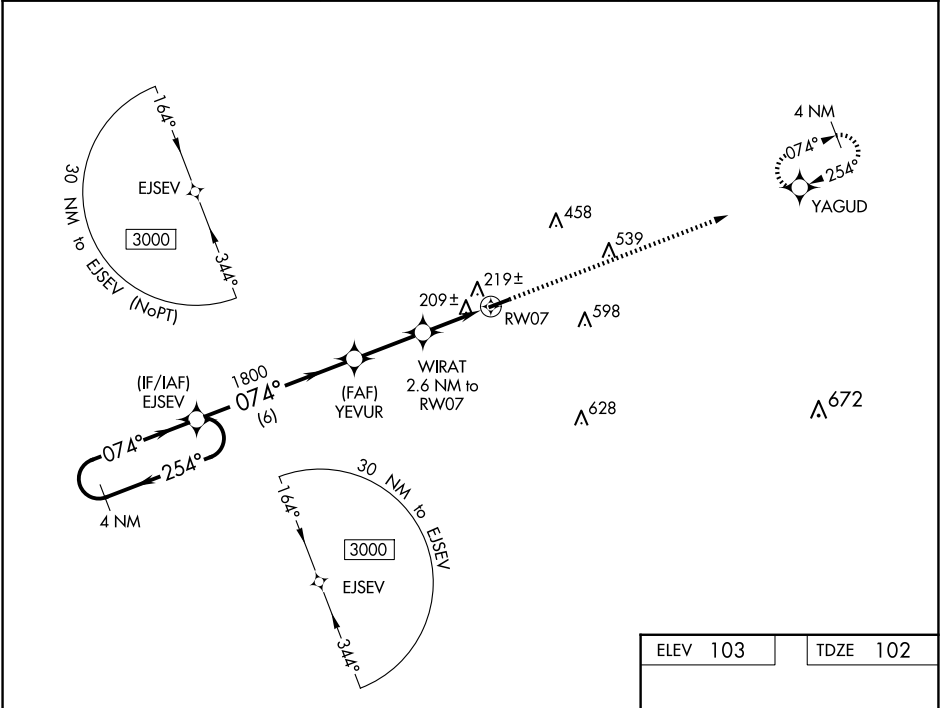
21084

WAAS CH 63132 W07A	APP CRS 074°	Rwy Idg TDZE Apt Elev	4005 102 103
--	------------------------	-----------------------------	---

RNAV (GPS) RWY 7
SUWANNEE COUNTY (24J)

<p>▽ When local altimeter setting not received, use Perry altimeter setting and increase all MDAs 100 feet. DME/DME RNP-0.3 NA. △ NA Helicopter visibility reduction below 1 SM NA. Procedure NA at night.</p>	<p>MISSED APPROACH: Climb to 3000 direct YAGUD and hold.</p>
--	--

AWOS-3 118.225	JACKSONVILLE CENTER 125.375 254.325	UNICOM 122.8 (CTAF) 0
--------------------------	---	---------------------------------



VGSI and descent angles not coincident (VGSI Angle 3.00/TCH 44).		3000	YAGUD
4 NM Holding Pattern		↑	✱
3000 ← 254° 074° →		3.00° TCH 40	
EJSEV		WIRAT 2.6 NM to RW07	
YEVUR		RW07	
1800		960	
6 NM		2.6 NM	
CATEGORY		D	
LP MDA		NA	
LNAV MDA		NA	
CIRCLING		NA	
A		B	
560-1 457 (500-1)		600-1 497 (500-1)	

REIL Rwy 7 and 25 0
MIRL Rwy 7-25 0

LIVE OAK, FLORIDA
Orig-B 26JUN14

30°18'N-83°01'W

SUWANNEE COUNTY (24J)
RNAV (GPS) RWY 7

SE-3, 07 AUG 2025 to 04 SEP 2025

SE-3, 07 AUG 2025 to 04 SEP 2025