

LIVE OAK, FLORIDA

AL-9758 (FAA)

21084

| | | |
|--|------------------------|---|
| WAAS CH 58232 W25A | APP CRS 254° | Rwy Idg 4005 TDZE 103 Apt Elev 103 |
|--|------------------------|---|

RNAV (GPS) RWY 25
SUWANNEE COUNTY (24J)

RNP APCH.

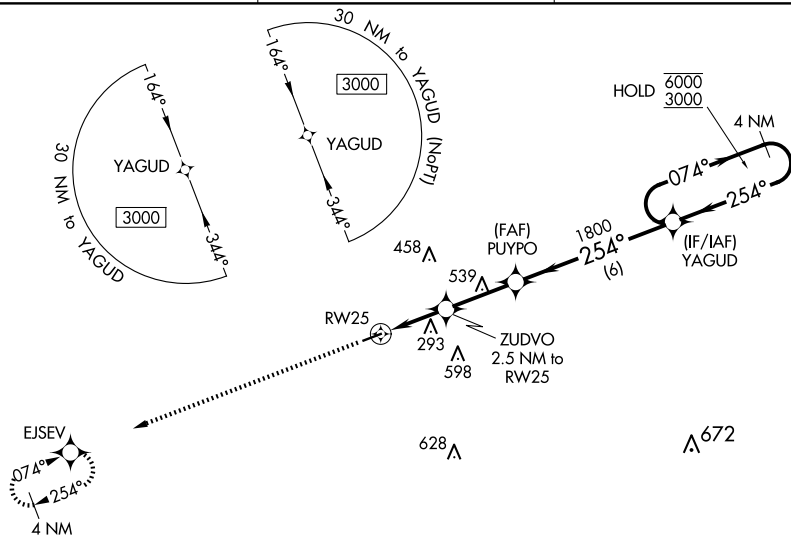


Procedure NA at night. Rwy 25 helicopter visibility reduction below 1 SM NA. For uncompensated Baro-VNAV systems, LNAV/VNAV NA below -15°C or above 54°C.

MISSED APPROACH: Climb to 3000 direct EJSEV and hold.

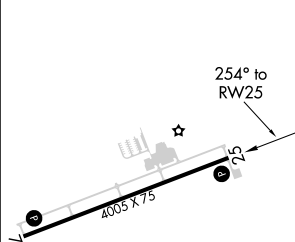
AWOS-3
118.225

JACKSONVILLE CENTER
125.375 254.325

UNICOM
122.8 (CTAF) **L**

ELEV 103

TDZE 103



REIL Rwy 7 and 25 **L**
MIRL Rwy 7-25 **L**

LIVE OAK, FLORIDA
Orig-C 21MAY20

SUWANNEE COUNTY (24J)

RNAV (GPS) RWY 25

30°18'N-83°01'W

SE-3, 07 AUG 2025 to 04 SEP 2025

***LNAV only.**

EISEV

YAGUD 4 NM Holding Pattern

ZUDVO 2.5 NM to RW25

PUYPO 1800

RW25

940*

2.5 NM, **2.7 NM**, **6 NM**

074°, **254°**, **254°**

6000, **3000**

GP 3.00°
TCH 52

| CATEGORY | A | B | C | D |
|-----------------|----------------------|----------------------|---|----|
| LPV DA | 353-1 | 250 (300-1) | | NA |
| LNAV/VNAV DA | 536-1½ | 433 (500-1½) | | NA |
| LNAV MDA | 560-1 | 457 (500-1) | | NA |
| CIRCLING | 560-1 457 (500-1) | 600-1 497 (500-1) | | NA |

SE-3, 07 AUG 2025 to 04 SEP 2025