

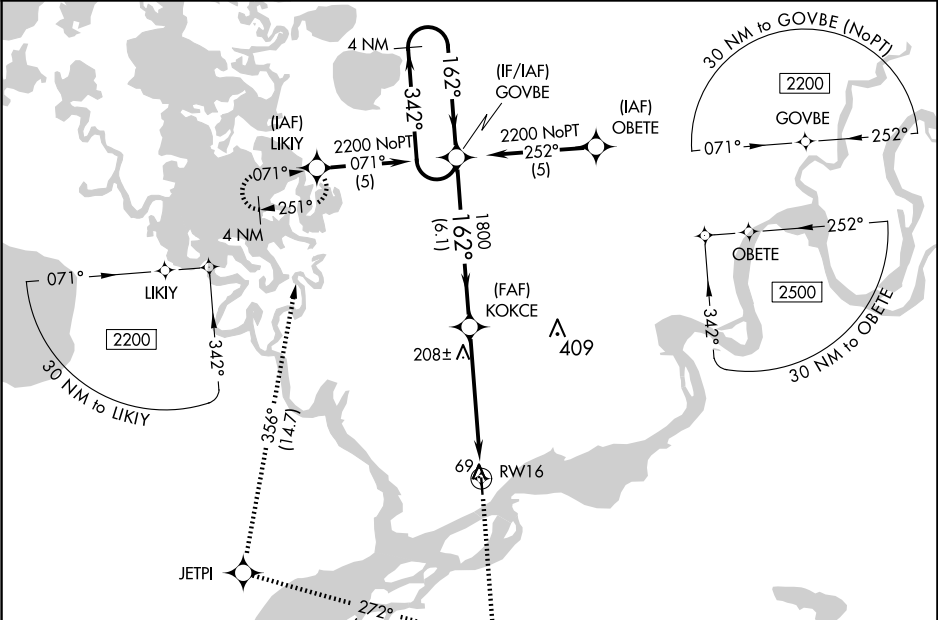
WAAS CH <b>69409</b> <b>W16A</b>	APP CRS <b>162°</b>	Rwy Idg <b>3248</b> TDZE <b>17</b> Apt Elev <b>17</b>
--	------------------------	---

RNAV (GPS) RWY 16

NAPAKIAK (WNA) (PANA)

<div><div><div>V</div><div>A NA</div><div>V</div></div></div> <div>DME/DME RNP-0.3 NA. When local altimeter setting not received, use Bethel altimeter setting. Rwy 16 helicopter visibility reduction 1 SM NA. Procedure NA at night for Cat C and D aircraft.</div>	<div>MISSED APPROACH: Climb to 2200 direct CUGAV and right turn on track 272° to JETPI on track 356° to LIKIY and hold.</div>
---	---

AWOS-3P <b>121.425</b>	ANCHORAGE CENTER <b>125.2 372.0</b>	CTAF <b>122.9 0</b>
---------------------------	--	------------------------



ELEV 17		TDZE 17	
4 NM Holding Pattern		2200 CUGAV	
GOVBE		JETPI	
2200		LIKIY	
GP 3.00° TCH 30		VGSi and RNAV glidepath not coincident (VGSi Angle 3.00/TCH 26).	
KOKCE		RW16	
6.1 NM		5.4 NM	
CATEGORY	A	B	C
LPV DA	298-1 281 (300-1)		
LNAV MDA	500-1	483 (500-1)	500-1½ 483 (500-1½)
CIRCLING	500-1	483 (500-1)	540-1½ 523 (600-1½)

