

APP CRS  
**198°**

Rwy Idg  
TDZE  
Apt Elev

**4400**  
**15**  
**15**

**RNAV (GPS) RWY 20**  
KOTLIK (2A9) (PFKO)

RNP APCH - GPS.

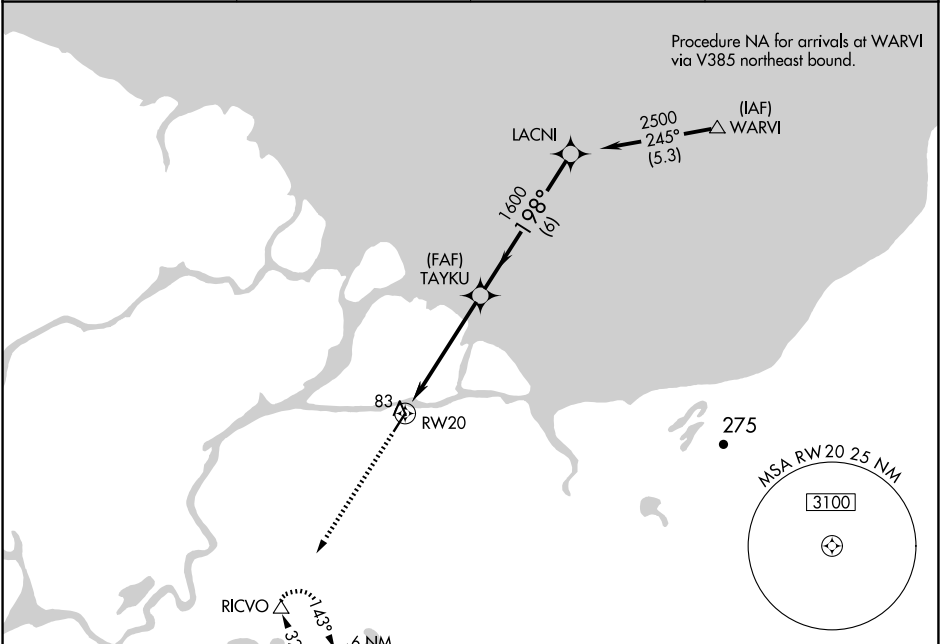
▼

▲ NA

When local altimeter not received use Emmonak altimeter setting. Procedure NA at night.

MISSED APPROACH: Climb to 8000 direct RICVO WP and hold.

AWOS-3P <b>118.1</b>	ENM/PAEM AWOS-3P <b>135.35</b>	ANCHORAGE CENTER <b>124.0</b>	CTAF <b>122.9</b> <b>0</b>
-------------------------	-----------------------------------	----------------------------------	-------------------------------



ELEV 15

TDZE 15

8000

RICVO

△

RW20

TAYKU

LACNI

2500

1600

198°

2.91°

TCH 40

5 NM

6 NM

Procedure Turn NA

CATEGORY	A	B	C	D
RNAV MDA	440-1	425 (500-1)	NA	
CIRCLING	480-1	465 (500-1)	NA	

MIRL Rwy 2-20

**0**