

VORTAC BRV	APP CRS	Rwy Ldg	6000
114.5	314°	TDZE	196
Chan 92		Apt Elev	219

VOR RWY 33
STAFFORD RGNL (RMN)

Inoperative table does not apply to Cat C.
Circling Rwy 15 NA at night.

MALS

MISSED APPROACH: Climbing left turn to 2000 direct BRV VORTAC and hold.

AWOS-3 126.325	QUANTICO APP CON ★ 127.05 290.375	GCO 135.075	UNICOM 122.725 (CTAF)
-------------------	--------------------------------------	----------------	--------------------------

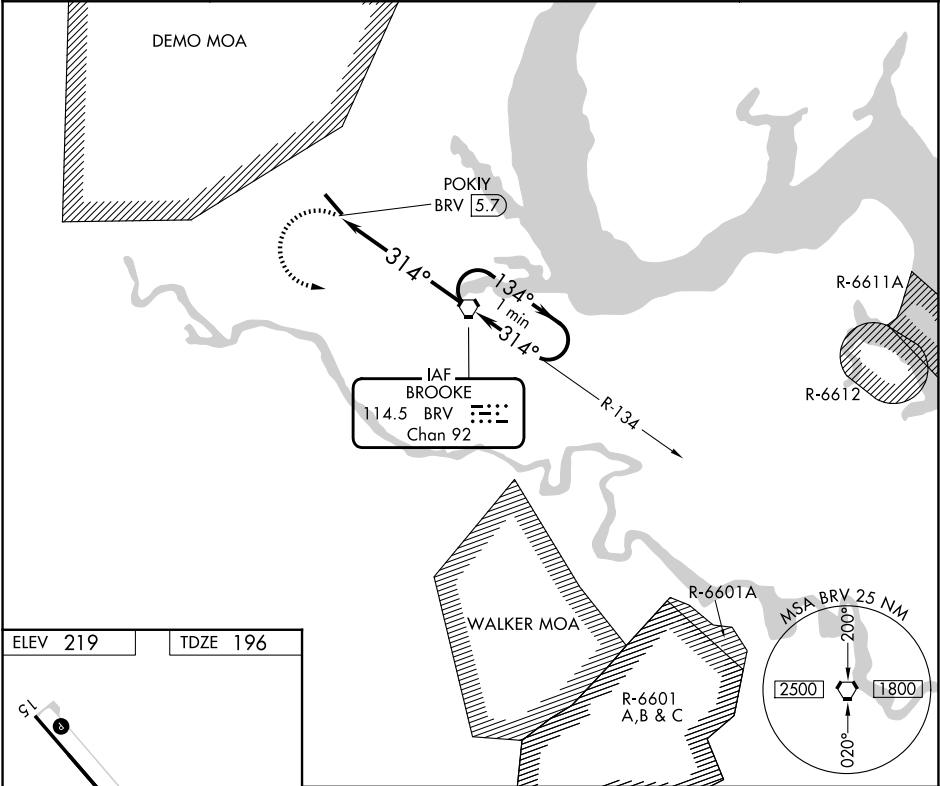











Diagram illustrating the approach path for Runway 15-33. The path is a straight line with a heading of 314°. The runway width is indicated as 6000 X 100. The diagram also shows the Runway End Identifier Lights (REIL) and the High Intensity Runway Lights (HIRL) for Runway 15-33. The FAF to MAP distance is 5.7 NM.

REIL Rwys 15 
 HIRL Rwy 15-33 

FAF to MAP 5.7 NM

Knots	60	90	120	150	180
Min:Sec	5:42	3:48	2:51	2:17	1:54

<div>2000</div> <div></div>		<div>BRV</div> <div></div>	<div>BRV VORTAC</div>		<div>One Minute Holding Pattern</div>
<div></div>		<div>POKIY</div> <div>BRV 5.7</div>	<div>BRV 4.1</div> <div></div>	<div>134°</div> <div></div>	<div>2000</div> <div></div>
		<div>314°</div> <div></div>		<div>≤ 2.95°</div> <div>TCH 45</div>	
		<div>1.6</div>	<div>4.1 NM</div>		
CATEGORY	A	B	C	D	
S-33	740-¾	544 (600-¾)	740-1½	740-1¾	
			544 (600-1½)	544 (600-1¾)	
CIRCLING	740-1	820-1	820-1¾	1040-2¾	
	521 (600-1)	601 (700-1)	601 (700-1¾)	821 (900-2¾)	

NE-3, 07 AUG 2025 to 04 SEP 2025

NE-3, 07 AUG 2025 to 04 SEP 2025