

LOC/DME I-RMN 108.75 Chan 24 (Y)	APP CRS 329°	Rwy Ldg 6000 TDZE 195 Apt Elev 219
--	------------------------	---

ILS or LOC RWY 33
STAFFORD RGNL (RMN)

ADF or DME required.

TA

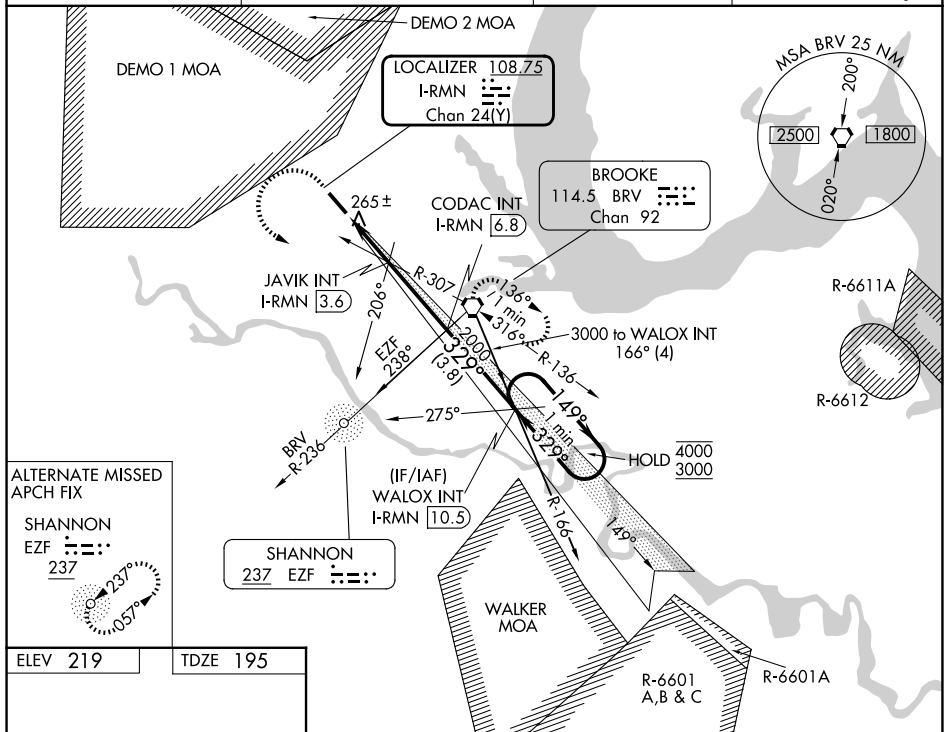
Circling Rwy 15 NA at night. Inop table does not apply

MALS



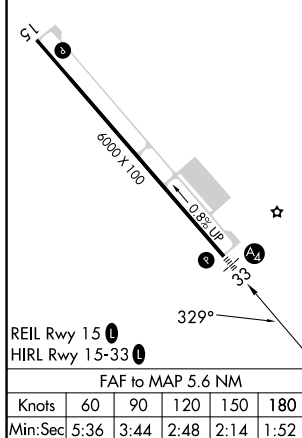
MISSED APPROACH: Climb to 700 then climbing left turn to 2100 direct BRV VORTAC and hold, continue climb-in-hold to 2100.

AWOS-3 126.325	QUANTICO APP CON ★ 127.05 290.375	GCO 135.075	UNICOM 122.725 (CTAF) 0
--------------------------	---	-----------------------	-----------------------------------



ELEV 219

TDZE 195



REIL Rwy 15 L

HIRL Rwy 15-33 **L**

FAF to MAP 5.6 NM

Knots	60	90	120	150	180
Min:Sec	5:36	3:44	2:48	2:14	1:52

STAFFORD, VIRGINIA

Amdt 1 16MAY24

700 2100 BRV

One Minute Holding Pattern

CODAC INT I-RMN 6.8

JAVIK INT I-RMN 3.6

WALOX INT I-RMN 10.5

I-RMN 1.2

I-RMN 2.2

2000

329°

149°

4000

3000

GS 3.00° TCH 46

1.1 NM 1.3 NM 3.2 NM 3.8 NM

CATEGORY	A	B	C	D
S-ILS 33		445-¾	250 (300-¾)	
S-LOC 33		560-¾	365 (400-¾)	
CIRCLING	720-1 501 (600-1)	820-1 601 (700-1)	820-1¾ 601 (700-1¾)	1040-2¾ 821 (900-2¾)

STAFFORD RGNL (RMN)

ILS or LOC RWY 33