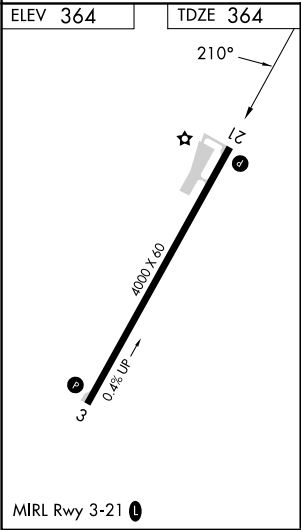
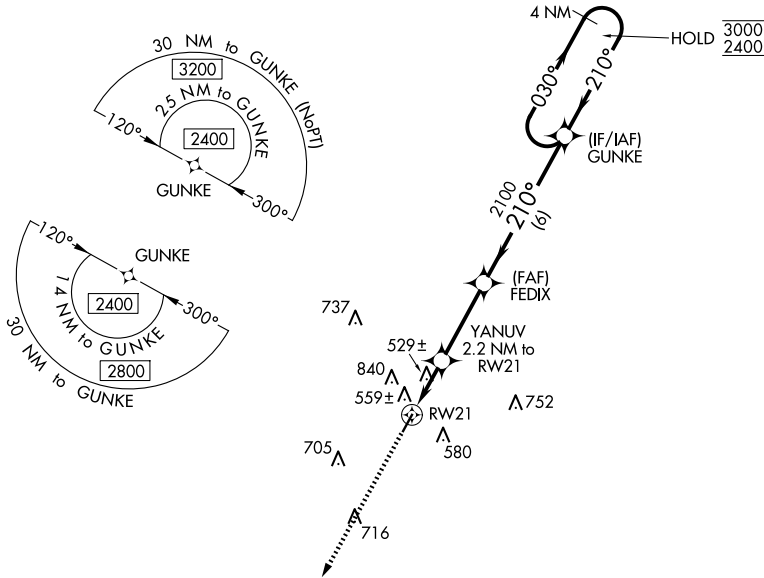





WAAS CH 53431 W21A	APP CRS 210°	Rwy Idg 4000 TDZE 364 Apt Elev 364
--	------------------------	---

RNAV (GPS) RWY 21
WINONA-MONTGOMERY COUNTY (5A6)

RNP APCH - GPS.	MISSED APPROACH: Climb to 2500 direct GUCEY and hold.
NA Rwy 21 helicopter visibility reduction below 1 SM NA. Procedure NA at night. Circling NA northwest of Rwy 3-21. When local altimeter setting not received, use GNF altimeter setting.	

AWOS-3PT 120.175	MEMPHIS CENTER 128.5 279.55	CTAF 122.9 0
----------------------------	---------------------------------------	------------------------



2500 ↑	GUCEY 	VGSI and descent angles not coincident (VGSI Angle 4.00/TCH 30).		4 NM Holding Pattern	
RW21 		YANUV 2.2 NM to RW21	FEDIX  2100	GUNKE	030° → 3000 ← 210° 2400
		1080	2100		
		2.2 NM	3.2 NM	6 NM	
CATEGORY	A		B	C	D
LP MDA	860-1 496 (500-1)			860-1 ³ / ₈ 496 (500-1 ³ / ₈)	NA
LNAV MDA	900-1 536 (600-1)			900-1 ¹ / ₂ 536 (600-1 ¹ / ₂)	NA
CIRCLING	960-1 596 (600-1)			1100-2 736 (800-2)	NA