

APP CRS
188°

Rwy Idg
2729

TDZE
196

Apt Elev
196

RNAV (GPS) RWY 19

SOUTH ALBANY (4BØ)

RNP APCH.

▼

▲ NA

Use Albany Intl altimeter setting. Procedure NA at night.
Rwy 19 helicopter visibility reduction below 1 SM NA.

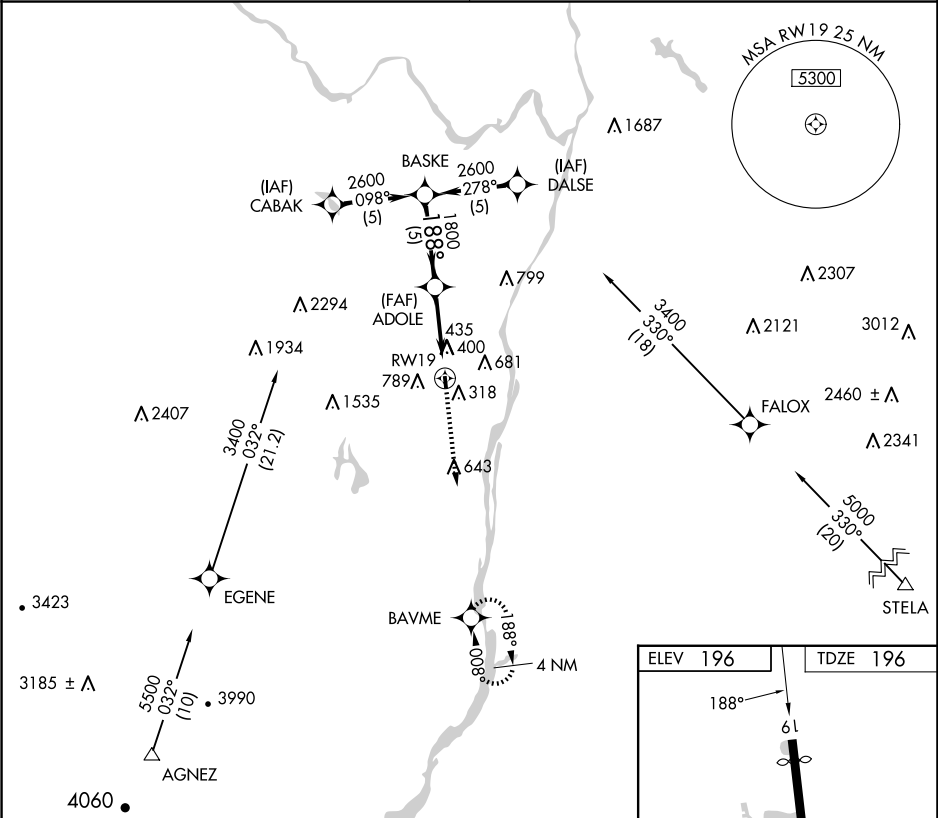
MISSED APPROACH: Climb to 3000 direct BAVME WP and hold.

ALBANY APP CON

118.05 263.075

CTAF

122.9 0



BASKE

Visual Segment - Obstacles.

3000

BAVME

Procedure Turn NA

2600

188°

ADOLE

1800

RWY19

5 NM

4.9 NM

| | | | | |
|----------|----------------------|--------------------------|----|---|
| CATEGORY | A | B | C | D |
| LNVA MDA | 740-1 | 544 (600-1) | NA | |
| CIRCLING | 840-1 644 (700-1) | 1180-1½ 984 (1000-1½) | NA | |

LIRL Rwy 1-19 0

ELEV 196

TDZE 196

188°

61

2853 x 60

0.45 UP

1