

WAAS
CH 77535
W23A

APP CRS
233°

Rwy ldg
TDZE 610
Apt Elev 610

RNAV (GPS) RWY 23

UNION COUNTY, TROY SHELTON FLD (35A)

RNP APCH - GPS.

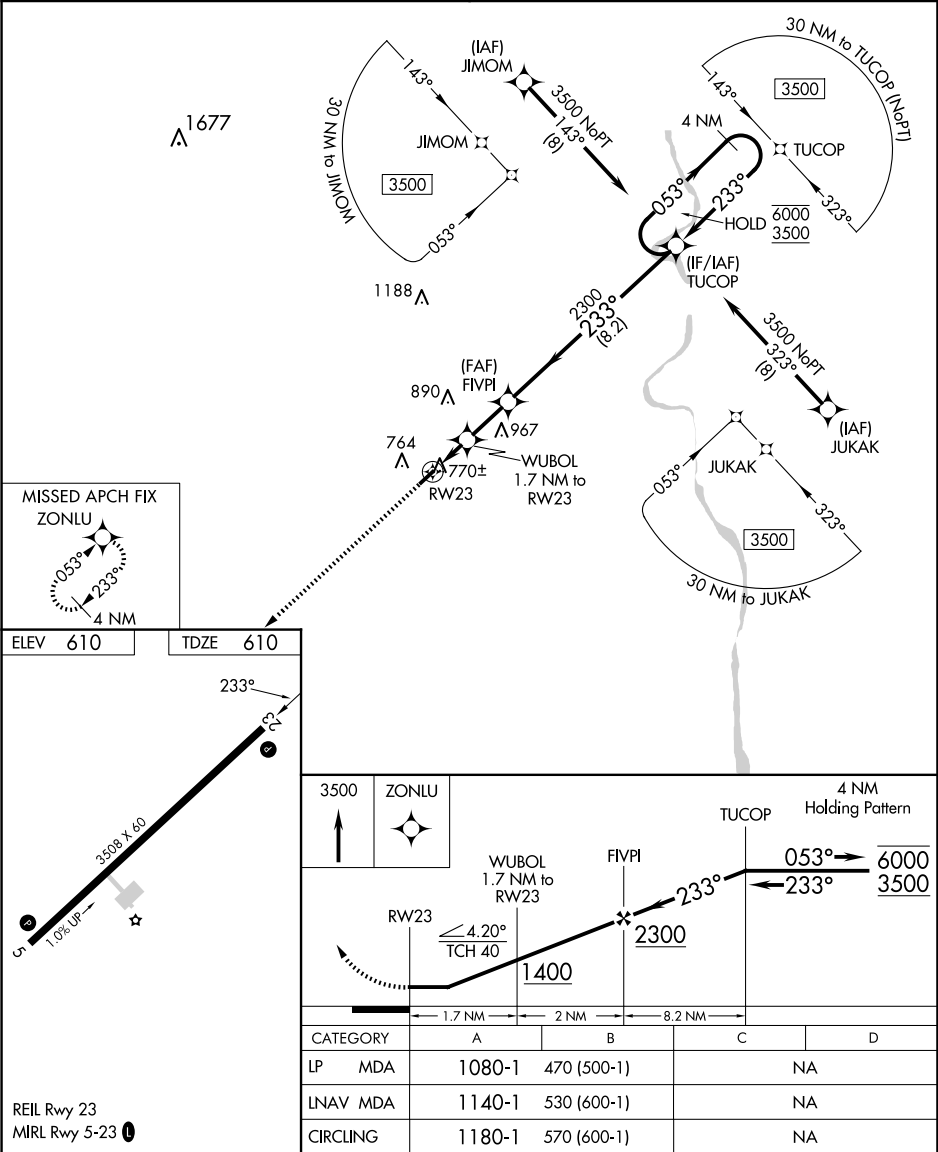
Procedure NA at night. When local altimeter setting not received, use Laurens altimeter setting and increase all MDAs 60 feet.
Rwy 23 helicopter visibility reduction below 1 SM NA.

MISSED APPROACH: Climb to 3500 direct ZONLU and hold, continue climb-in-hold to 3500.

AWOS-3PT
119.45

GREER APP CON ★
119.4 350.2

UNICOM
122.7 (CTAF) 0



SE-2, 07 AUG 2025 to 04 SEP 2025

SE-2, 07 AUG 2025 to 04 SEP 2025