

APP CRS  
182°

Rwy Ldg  
TDZE  
Apt Elev

4195  
2941  
2941

RNAV (GPS) RWY 18

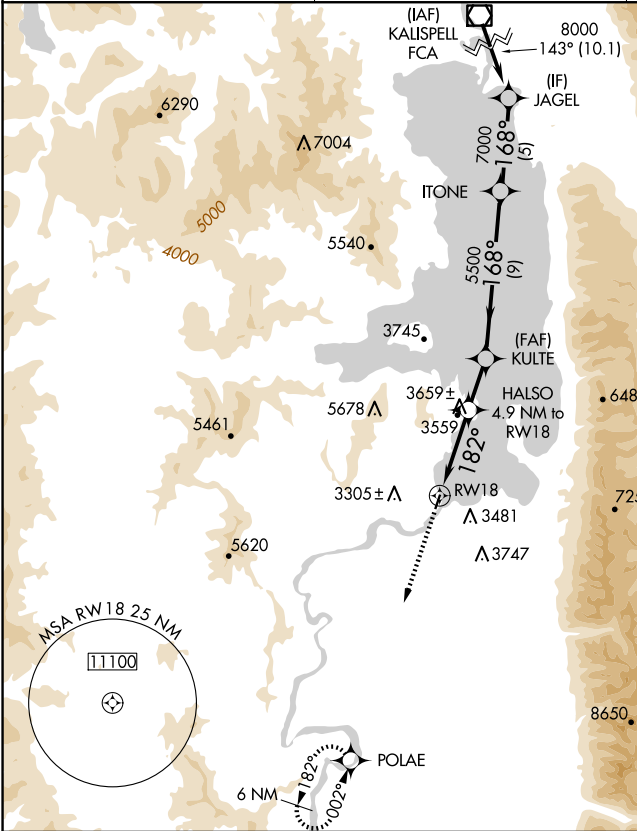
POLSON (8S1)

NA

Procedure NA at night. DME/DME RNP-0.3 NA.  
Use Glacier Park Intl altimeter setting.  
Helicopter visibility reduction below 1 SM NA.

MISSED APPROACH: Climb to 9200 direct POLAE and hold.

GPI ASOS 132.625	SALT LAKE CENTER 127.075 244.875	UNICOM 122.8 (CTAF) 0
---------------------	-------------------------------------	--------------------------



ELEV 2941

TDZE 2941

WATER RWY: 03W - 21W  
4000 X 500

MIRL Rwy 18-36 0

9200	POLAE	HALSO 4.9 NM to RW18	KULTE	ITONE	JAGEL	FCA VOR/DME
↑	✧	≤3.09° TCH 30	182°	168°	143°	8000
4.9 NM	2.9 NM	9 NM	5 NM	10.1 NM		Procedure Turn NA
CATEGORY	A	B	C	D		
LNNAV MDA	4480-1¼ 1539 (1600-1¼)	4480-1½ 1539 (1600-1½)	NA			
CIRCLING	4480-1¼ 1539 (1600-1¼)	4480-1½ 1539 (1600-1½)	NA			