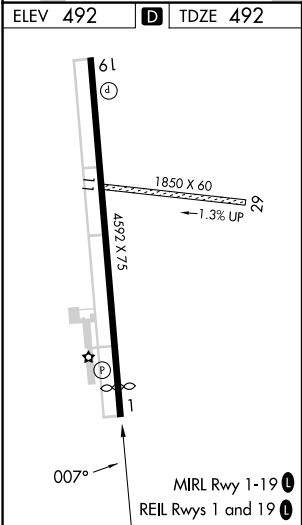
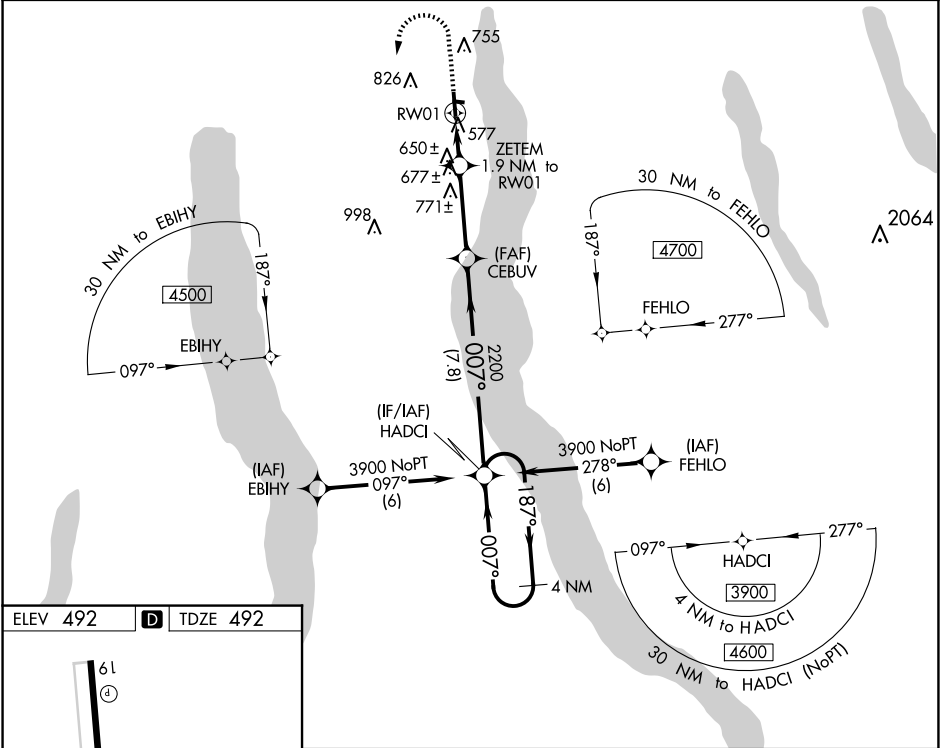


WAAS CH <b>81936</b> <b>W01A</b>	APP CRS <b>007°</b>	Rwy Idg <b>4199</b> TDZE <b>492</b> Apt Elev <b>492</b>	<b>RNAV (GPS) RWY 1</b> FINGER LAKES RGNL (ØG7)
--	------------------------	---	--

**⚠** For uncompensated Baro-VNAV systems, LNAV/VNAV NA below -15°C (5°F) or above 54°C (130°F). Baro-VNAV and VDP NA when using Syracuse altimeter setting. Rwy 1 helicopter visibility reduction below ¾ SM NA. DME/DME RNP-0.3 NA. When local altimeter setting not received, use Syracuse altimeter setting and increase all DA 86 feet and all visibility ¼ SM, increase all MDA 100 feet.

**MISSED APPROACH:** Climb to 1000 then climbing left turn to 3900 direct HADCI and hold, continue climb-in-hold to 3900.

AWOS-3 <b>120.0</b>	SYRACUSE APP CON <b>126.125 269.125</b>	ROCHESTER APP CON <b>119.55 269.6</b> (W-NW)	ELMIRA APP CON ★ <b>124.3 257.8</b> (SW-SE)	UNICOM <b>122.8</b> (CTAF) <b>Ø</b>
------------------------	--	---	--	--



1000	3900	HADCI	4 NM Holding Pattern
<b>* LNAV only</b>			
* 1.2 NM to 1.9 NM to RW01			
* 1120			
CEBUV 2200			
HADCI 007°			
3900 187°			
GP 3.00°			
TCH 40			
1.2 NM 0.7 NM 3.3 NM 7.8 NM			
CATEGORY	A	B	C D
LPV DA	742-7/8	250 (300-7/8)	NA
LNAV/VNAV DA	959-15/8	467 (500-15/8)	NA
LNAV MDA	900-1	408 (500-1)	NA
Ø CIRCLING	980-1 488 (500-1)	1180-1 688 (700-1)	NA