

LOC I-UTA 110.95 Chan 46 (Y)	APP CRS 347°	Rwy Idg 8500 TDZE 194 Apt Elev 194
--	------------------------	---

ILS or LOC RWY 35

TUNICA MUNI (UTA)

⚠

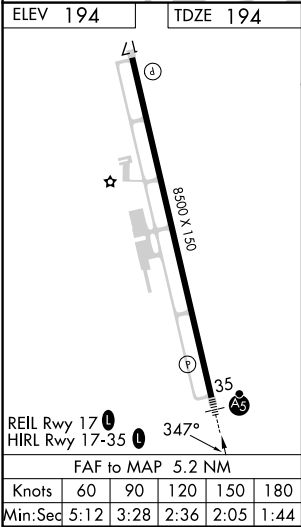
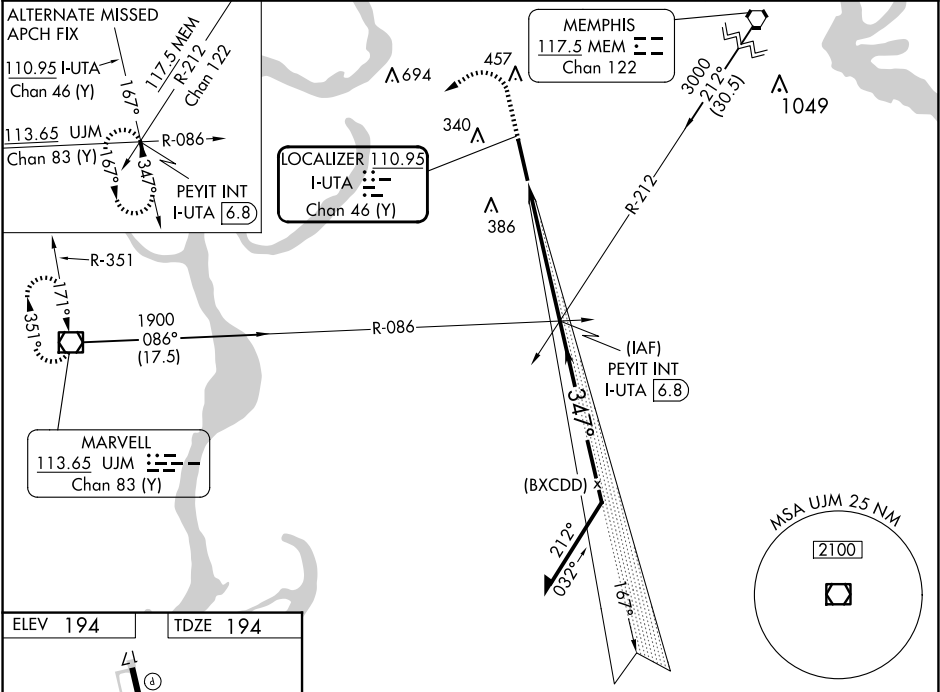
⚠

VDP NA with Memphis altimeter setting. When local altimeter not received, use Memphis altimeter setting and increase S-ILS 35 DA to 480 and all MDA 100 feet, increase S-LOC 35 Cats C and D and Circling Cat C visibility ¼ mile. For inoperative MALSR when using Memphis altimeter setting increase S-ILS 35 all Cats visibility to 1 mile.

MALSR

MISSED APPROACH: Climb to 700 then climbing left turn to 1900 direct UJM VOR/DME and hold.

AWOS-3 118.075	MEMPHIS APP CON 119.1 291.6	CLNC DEL 118.9	UNICOM 123.0 (CTAF)
--------------------------	---------------------------------------	--------------------------	-------------------------------



700	1900	UJM	VGSI and ILS glidepath not coincident (VGSI Angle 3.00/TCH 47).			