

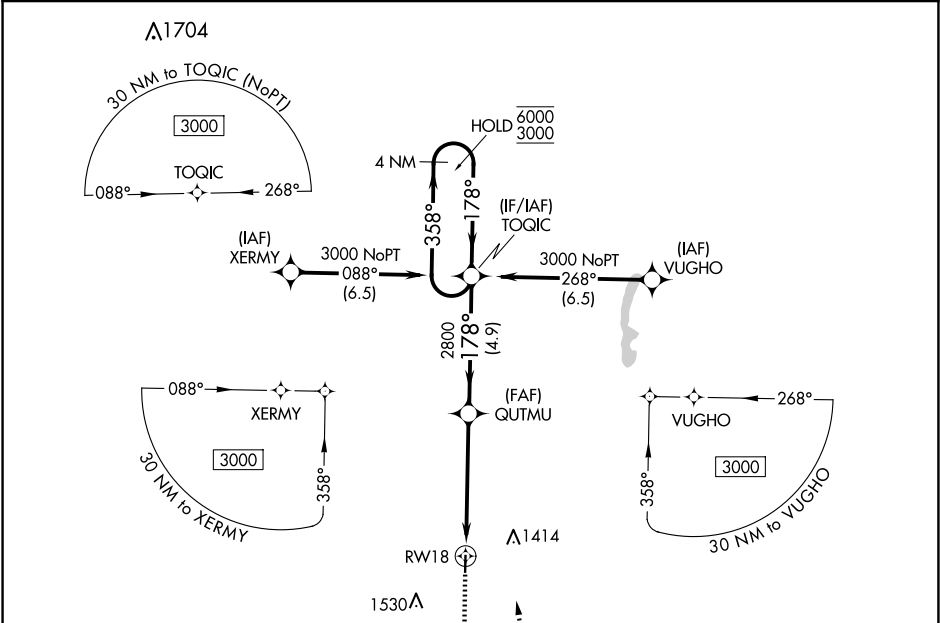
WAAS CH 65645 W18A	APP CRS 178°	Rwy Idg TDZE 1131 Apt Elev 1131
--	------------------------	---

RNAV (GPS) RWY 18

LAMONI MUNI (LWD)

RNP APCH-GPS. ⚠ Circling NA west of Rwy 18-36. Rwy 18 helicopter visibility reduction below ¾ SM NA. For uncompensated Baro-VNAV systems, LNAV/VNAV NA below -21°C or above 54°C.	MISSED APPROACH: Climb to 2000, then climbing left turn 3000 direct TOQIC and hold.
--	---

ASOS 120.0	MINNEAPOLIS CENTER 125.65 306.95	CTAF 122.9
----------------------	--	----------------------



ELEV 1131		TDZE 1131	
2000		3000	
TOQIC		TOQIC	
1 NM		1 NM to RW18	
RW18		RW18	
QUTMU		QUTMU	
2800		2800	
TOQIC		TOQIC	
4 NM Holding Pattern		4 NM Holding Pattern	
358°		358°	
178°		178°	
GP 3.00°		GP 3.00°	
TCH 50		TCH 50	
CATEGORY		CATEGORY	
A		B	
C		D	
LPV DA		1381-1 250 (300-1)	
LNAV/VNAV DA		1381-1 250 (300-1)	
LNAV MDA		1500-1 369 (400-1)	
CIRCLING		1520-1 389 (400-1)	
1720-1 589 (600-1)		1720-1½ 589 (600-1½)	
1720-2 589 (600-2)		1720-2 589 (600-2)	
MIRL Rwy 18-36		MIRL Rwy 18-36	