

WAAS CH <b>82206</b> <b>W15A</b>	APP CRS <b>147°</b>	Rwy Ldg <b>11820</b> TDZE <b>504</b> Apt Elev <b>504</b>
--	------------------------	--

RNAV (GPS) RWY 15  
GRIFFISS INTL (RME)

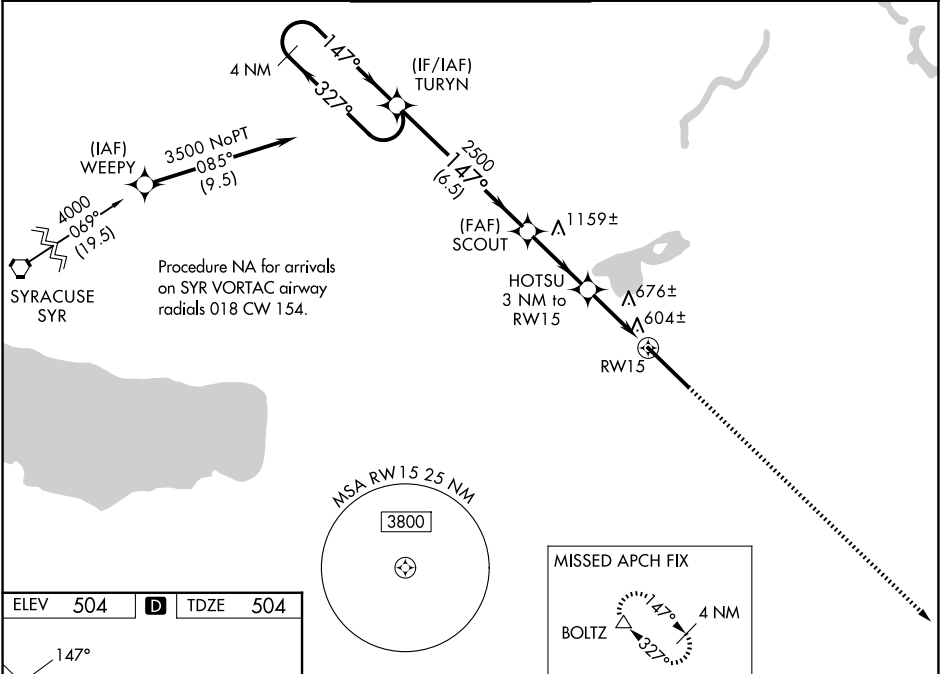
RNP APCH-GPS.

▼ For uncompensated Baro-VNAV systems, LNAV/VNAV NA below -16°C or above 48°C.

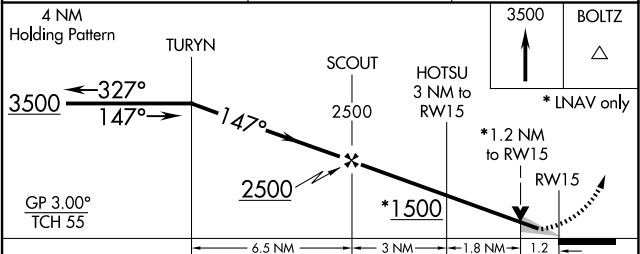
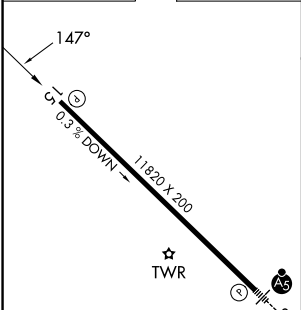
▲ When local altimeter setting not received, use Syracuse altimeter setting and increase LPV DA to 804 feet, LNAV/VNAV DA to 1152 feet and all MDA 100 feet. Increase LNAV/VNAV all Cats, LNAV Cats C and D and Circling Cats B and C visibility ¼ SM. Baro-VNAV and VDP NA when using Syracuse altimeter setting. Circling NA southwest of Rwy 15-33.

MISSED APPROACH: Climb to 3500 direct BOLTZ and hold.

ATIS <b>118.7</b>	SYRACUSE APP CON <b>127.425 290.45</b>	GRIFFISS TOWER ★ <b>118.1 (CTAF) 0 291.7</b>	GND CON <b>121.9</b>	UNICOM <b>122.95</b>
----------------------	---	---	-------------------------	-------------------------



ELEV <b>504</b>	<b>D</b>	TDZE <b>504</b>
-----------------	----------	-----------------



CATEGORY	A	B	C	D
LPV DA		704-1	200 (200-1)	
LNAV/VNAV DA		1052-2	548 (600-2)	
LNAV MDA	940-1	436 (500-1)	940-1¼ 436 (500-1¼)	940-1½ 436 (500-1½)
CIRCLING	1140-1 636 (700-1)	1260-1 756 (800-1)	1400-2¾ 896 (900-2¾)	1640-3 1136 (1200-3)

HIRL Rwy 15-33 0

NE-2, 07 AUG 2025 to 04 SEP 2025

NE-2, 07 AUG 2025 to 04 SEP 2025