

LOC/DME I-RME	APP CRS	Rwy Ldg	11820
110.1	327°	TDZE	498
Chan 38		Apt Elev	504

ILS or LOC RWY 33

GRIFFISS INTL (RME)

RNP APCH - GPS.

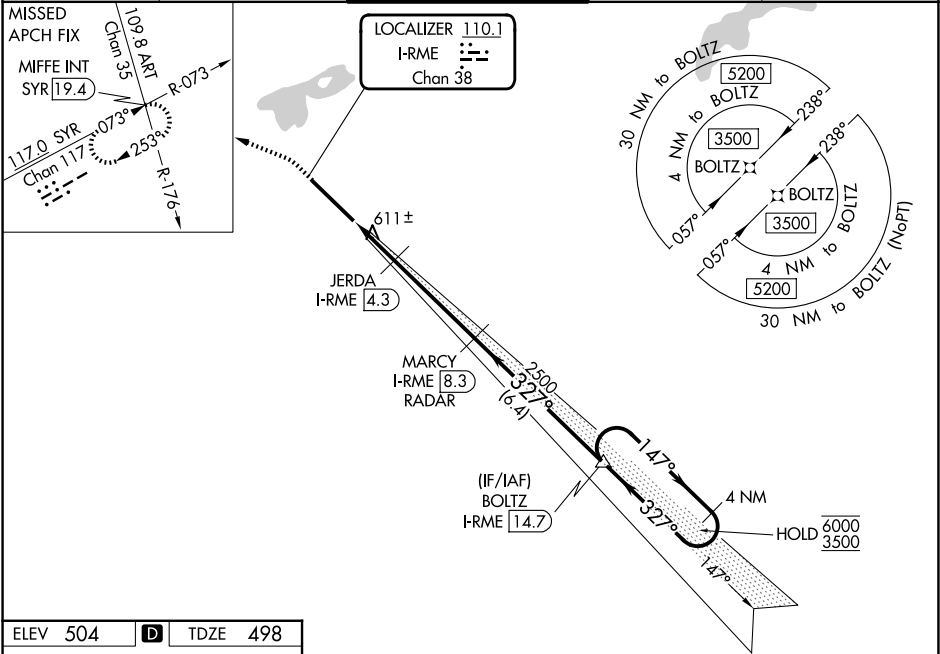
⚠

Circling NA southwest of Rwy 15-33.
Rwy 33 helicopter visibility reduction below ¾ SM NA.
Inop table does not apply.

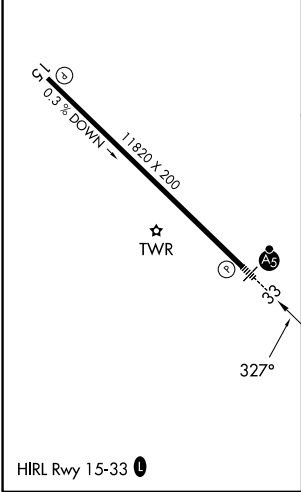
MALSR

MISSED APPROACH: Climb to 1600 then climbing left turn to 4000 on heading 305° and on SYR VORTAC R-073 to MIFFE INT/SYR 19.4 DME and hold.

ATIS	SYRACUSE APP CON	GRIFFISS TOWER ★	GND CON	UNICOM
118.7	127.425 290.45	118.1(CTAF) 0 291.7	121.9	122.95



ELEV 504	D	TDZE 498
----------	---	----------



1600	4000	SYR R-073	MIFFE INT	MARCY I-RME 8.3 RADAR	BOLTZ I-RME 14.7	4 NM Holding Pattern
hdg 305°						
		JERDA I-RME 4.3	2500	1200	2500	6000 3500
		I-RME 2.2	I-RME 3.2			GS 3.00° TCH 56
		1 NM	1.1 NM	4 NM	6.4 NM	
CATEGORY	A	B	C	D		
S-ILS 33		784-7/8	286 (300-7/8)			
S-LOC 33	880-1	382 (400-1)	880-1 1/8	382 (400-1 1/8)		
CIRCLING	1120-1 616 (700-1)	1220-1 716 (800-1)	1380-2 1/2 876 (900-2 1/2)	1640-3 1136 (1200-3)		

NE-2, 07 AUG 2025 to 04 SEP 2025

NE-2, 07 AUG 2025 to 04 SEP 2025