

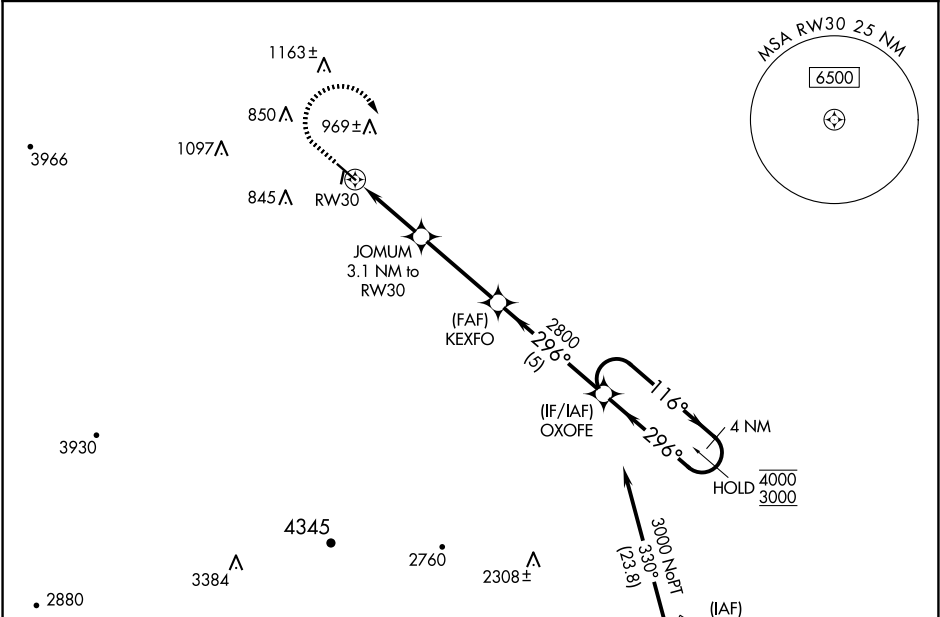
WAAS CH <b>69544</b> <b>W30A</b>	APP CRS <b>296°</b>	Rwy Idg <b>5000</b> TDZE <b>610</b> Apt Elev <b>625</b>
--	------------------------	---

RNAV (GPS) RWY 30

NEW COALINGA MUNI (C80)

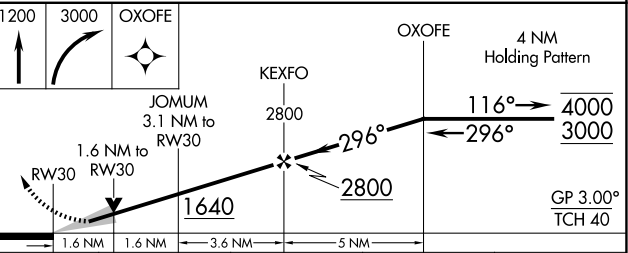
RNP APCH - GPS.	MISSED APPROACH: Climb to 1200, then climbing right turn to 3000 direct OXOFE and hold.
<div><div></div><div>Circling to Rwy 1, 19 NA at night. For uncompensated Baro-VNAV systems, LNAV/VNAV NA below -16°C or above 54°C.</div></div>	

AWOS-3 <b>119.275</b>	OAKLAND CENTER <b>128.7 307.0</b>	UNICOM <b>122.7 (CTAF) 0</b>
--------------------------	--------------------------------------	---------------------------------



ELEV <b>625</b>	TDZE <b>610</b>
-----------------	-----------------

Procedure NA for arrival on AVE VOR/DME  
airway radials 257 CW 313.



CATEGORY	A	B	C	D
LPV DA	936-1 326 (400-1)			
LNAV/VNAV DA	1030-1½ 420 (500-1½)			
LNAV MDA	1140-1 530 (600-1)	1140-1½ 530 (600-1½)		
CIRCLING	1160-1 535 (600-1)	1320-1 695 (700-1)	1420-2¼ 795 (800-2¼)	1700-3 1075 (1100-3)