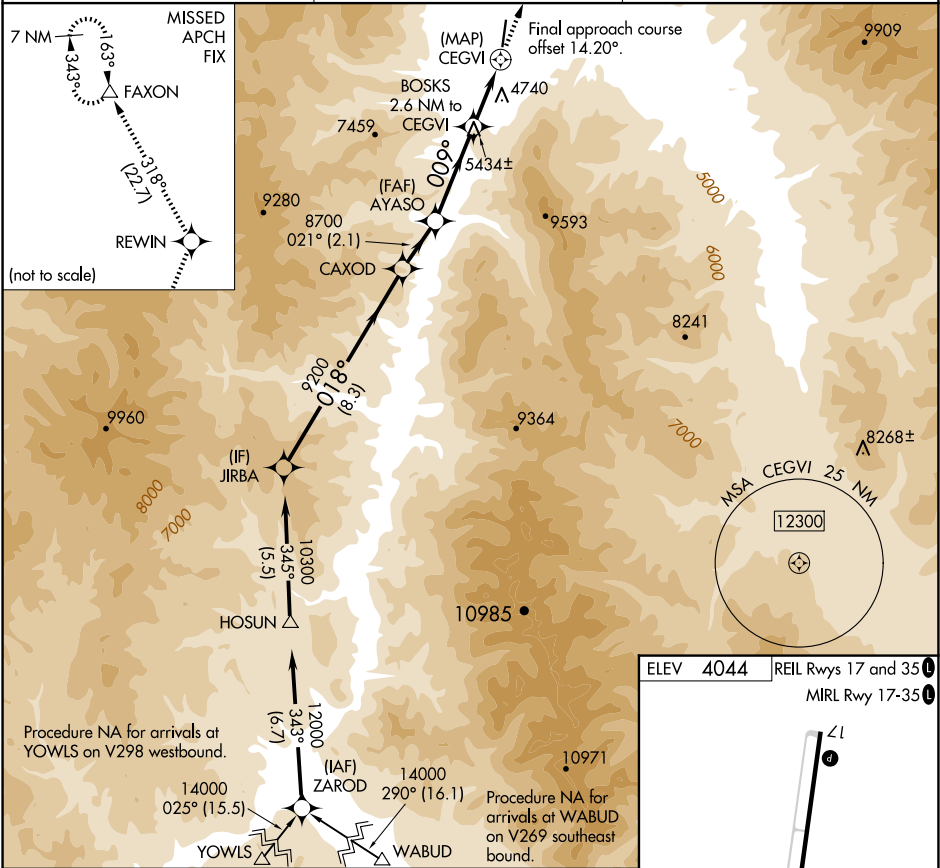


APP CRS	Rwy Ldg	N/A
009°	TDZE	N/A
	Apt Elev	4044

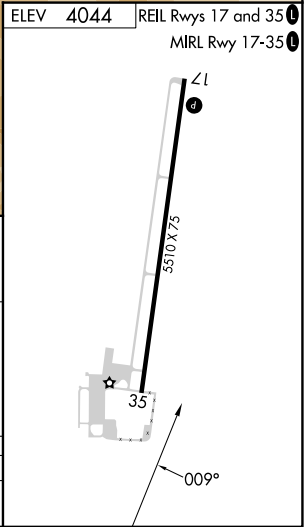
RNAV (GPS)-D
LEMHI COUNTY (SMN)

NA -12°C	Circling Rwy 35 NA at night. DME/DME RNP-0.3 NA. Circling NA for Cat C east of Rwy 17-35.	MISSED APPROACH: Climb to 12000 direct REWIN and on track 318° to FAXON and hold, continue climb-in-hold to 12000.
-------------	---	--

AWOS-3PT 135.075	SALT LAKE CENTER 132.4 338.3	UNICOM 122.8 (CTAF)
---------------------	---------------------------------	------------------------



JIRBA	CAXOD	AYASO	BOSKS	REWIN	FAXON
10300	9200	8700	7020	318°	△
8.3 NM		2.1 NM	3.6 NM	2.6 NM	0.5
CATEGORY	A	B	C	D	
CIRCLING	6000-1¼ 1956 (2000-1¼)	6000-1½ 1956 (2000-1½)	6220-3 2176 (2200-3)	NA	



NW-1, 07 AUG 2025 to 04 SEP 2025

NW-1, 07 AUG 2025 to 04 SEP 2025