

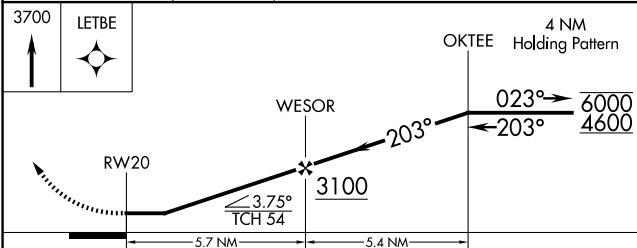
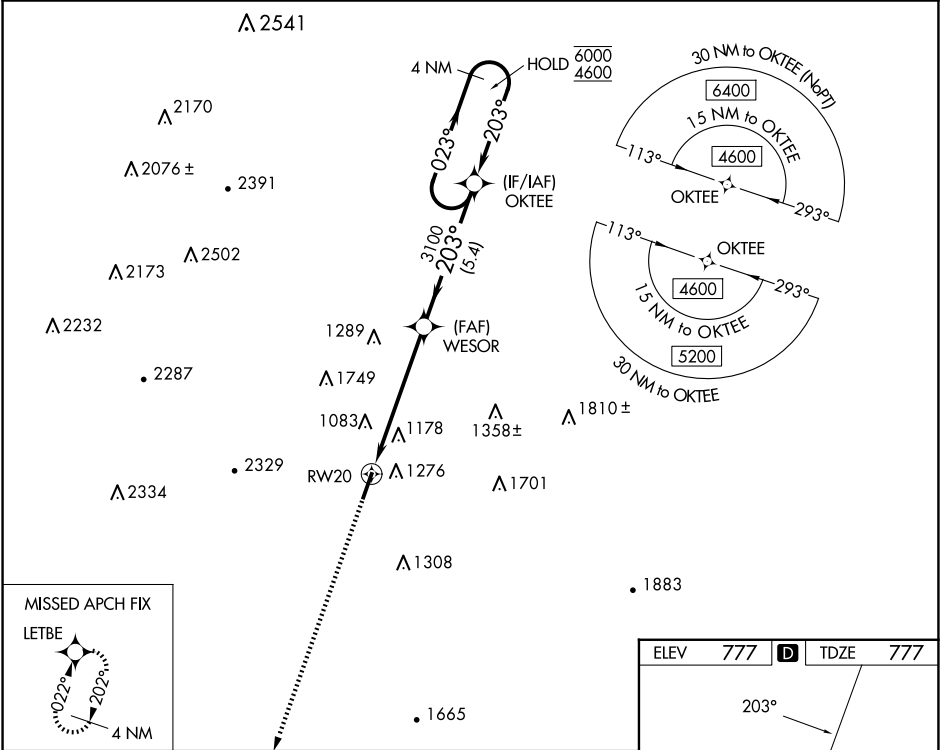
WAAS CH 86241 W20A	APP CRS 203°	Rwy Idg TDZE Apt Elev	4740 777 777
--	------------------------	-----------------------------	---

RNAV (GPS) RWY 20

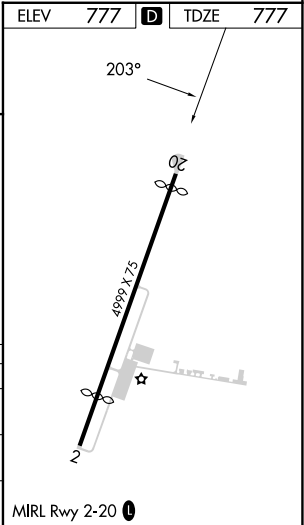
BARWICK LAFAYETTE (9A5)

RNP APCH - GPS.	MISSED APPROACH: Climb to 3700 direct LETBE and hold, continue climb-in-hold to 3700.
Procedure NA at night. Rwy 20 helicopter visibility reduction below 1 SM NA. When local altimeter setting not received, use CHA altimeter setting and increase all MDAs 80 feet.	

AWOS-3 119.775	CHATTANOOGA APP CON ★ 125.1 379.1	UNICOM 122.8 (CTAF) 0
--------------------------	---	---------------------------------



CATEGORY	A	B	C	D
LP MDA	1400-1 623 (700-1)		NA	
LNAV MDA	1440-1 663 (700-1)		NA	
CIRCLING	1660-1¼ 883 (900-1¼)		NA	



SE-4, 07 AUG 2025 to 04 SEP 2025

SE-4, 07 AUG 2025 to 04 SEP 2025