

WAAS CH <b>86831</b> <b>W27A</b>	APP CRS <b>266°</b>	Rwy Ldg TDZE <b>6037</b> Apt Elev <b>6056</b>
--	------------------------	---

RNAV (GPS) RWY 27

SPANISH PEAKS AIRFIELD (4V1)

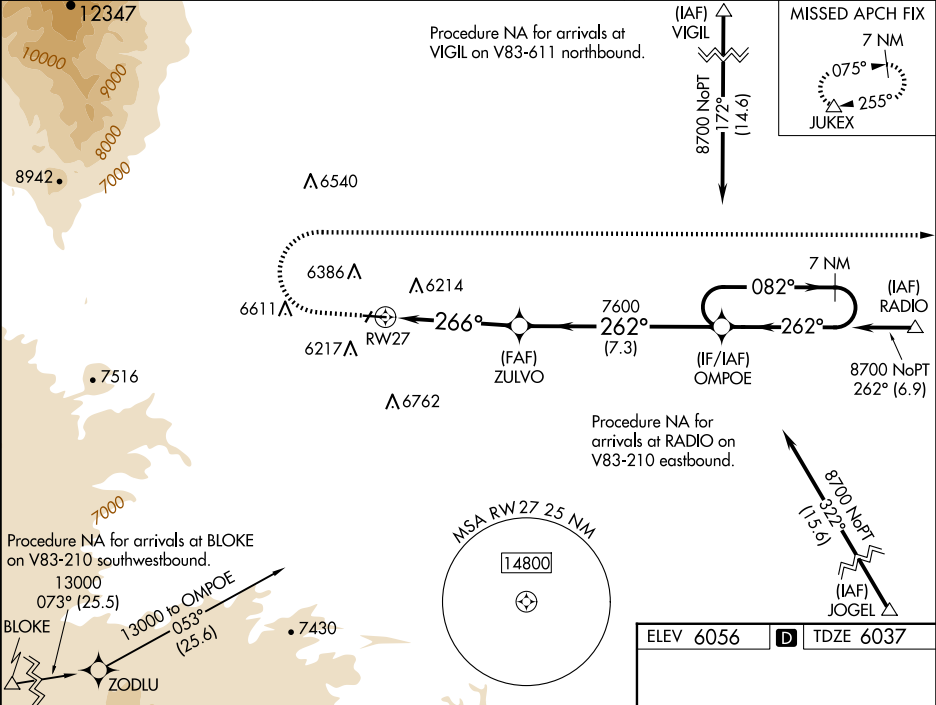
⚠

NA

For uncompensated Baro-VNAV systems, LNAV/VNAV NA below -26°C (-14°F) or above 48°C (118°F). DME/DME RNP-0.3 NA. When local altimeter setting not received, use Trinidad altimeter setting and increase all DA 119 feet and all MDA 120 feet; increase LPV all Cnts visibility ¼ mile, increase LNAV/VNAV all Cnts and LNAV Cnts C/D visibility ⅜ mile. Baro-VNAV and VDP NA when using Trinidad altimeter setting.

MISSED APPROACH: Climb to 6800 then climbing right turn to 9400 direct JUKEX and hold.

AWOS-3PT <b>123.6</b>	DENVER CENTER <b>128.375 379.95</b>	UNICOM <b>122.8 (CTAF) 0</b>
--------------------------	--	---------------------------------



6800	9400	JUKEX	OMPOE	7 NM Holding Pattern
*LNAV only	*1.4 NM to RWY27		7600	7600
RWY27	1.4 NM	3.4 NM	7.3 NM	GP 3.00° TCH 45
CATEGORY	A	B	C	D
LPV DA	6287-1 250 (300-1)			
LNAV/VNAV DA	6525-1⅓ 488 (500-1⅓)			
LNAV MDA	6520-1 483 (500-1)	6520-1⅓ 483 (500-1⅓)		
CIRCLING	6720-1 664 (700-1)	7080-3 1024 (1100-3)	7120-3 1064 (1100-3)	

ELEV 6056 TDZE 6037

266°

4715 X 75

0.6% UP

27

MIRL Rwy 9-27 0