

WAAS CH <b>99310</b> <b>W18B</b>	APP CRS <b>179°</b>	Rwy Idg TDZE Apt Elev	<b>5000</b> <b>55</b> <b>55</b>
--	------------------------	-----------------------------	---------------------------------------

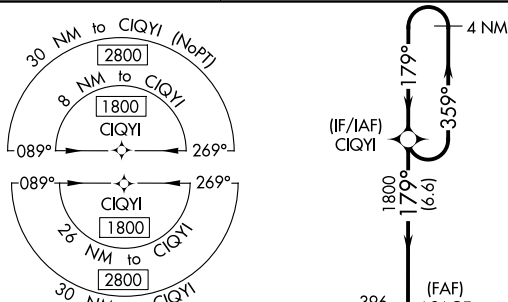
## RNAV (GPS) Z RWY 18

PICAYUNE MUNI (MJD)

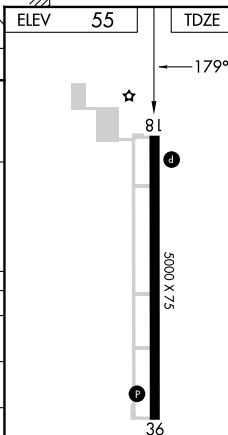
- ⚠** For uncompensated Baro-VNAV systems, LNAV/VNAV NA below -15°C (5°F) or above 54°C (130°F). Baro-VNAV and VDP NA when using Stennis Intl altimeter setting. DME/DME RNP-0.3 NA. Helicopter visibility reduction below ¾ SM NA. Procedure NA when R-4403 B, C, or E is active. When local altimeter setting not received, used Stennis Intl altimeter setting: increase LPV DA to 377 and visibility all Cnts ½ mile; increase LNAV/VNAV DA to 621 and visibility all Cnts ½ mile; increase all MDA 40 feet and Circling Cnt C visibility ¼ mile.

**MISSED APPROACH:** Climb to 1200, then climbing right turn to 1800 direct CIQYI and hold.

AWOS-3PT <b>119.075</b>	GULFPORT APP CON★ <b>124.6 354.1</b>	UNICOM <b>122.8</b> (CTAF) <b>0</b>
----------------------------	---	--



△695

[illegible]

RNAV (GPS) Z RWY 18