

WAAS CH 42938 W18A	APP CRS 179°	Rwy Idg 5000 TDZE 55 Apt Elev 55
--	------------------------	---

RNAV (GPS) Y RWY 18

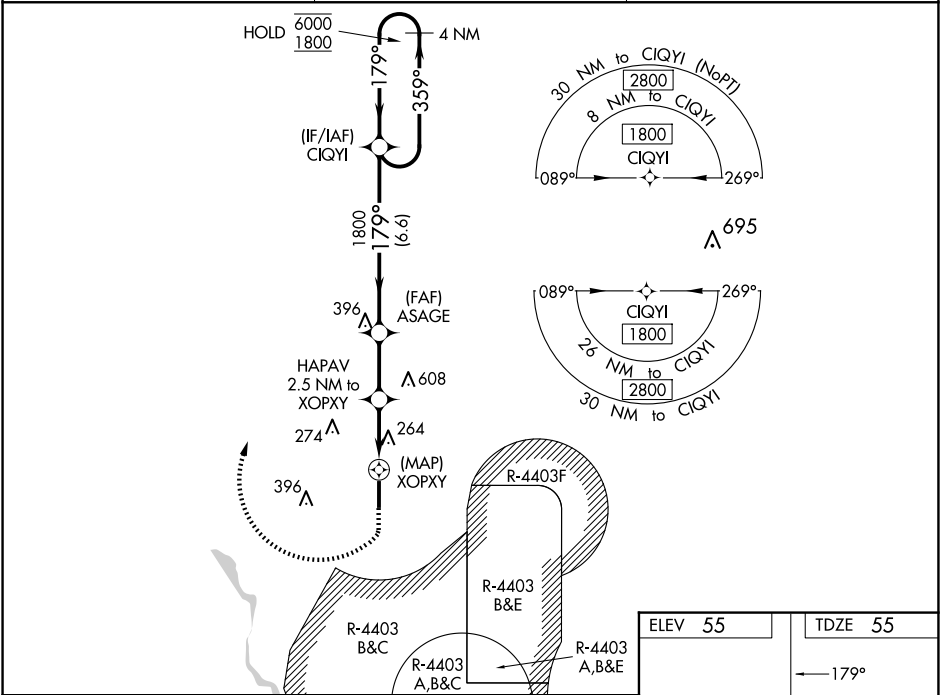
PICAYUNE MUNI (MJD)

RNP APCH.

⚠ Baro-VNAV and VDP NA when using Stennis Intl altimeter setting. Rwy 18 helicopter visibility reduction below ¾ SM NA. For uncompensated Baro-VNAV systems, LNAV/VNAV NA below -15°C or above 5°C. When local altimeter setting not received, use Stennis Intl altimeter setting: increase LPV DA to 377 and visibility all Cats ½ mile; increase LNAV/VNAV DA to 621 and visibility all Cats ½ mile; increase all MDA 40 feet. Procedure NA when R-4403 B/C/E is active.

MISSED APPROACH: (Do not exceed 185K) Climb to 560 then climbing right turn to 1800 direct CIQYI and hold.

AWOS-3PT 119.075	GULFPORT APP CON ★ 124.6 354.1	UNICOM 122.8 (CTAF) ①
----------------------------	--	---------------------------------



4 NM Holding Pattern

GP 3.00° TCH 36

ASAGE HAPAV 2.5 NM to XOPXY

*1.3 NM to XOPXY

*1040

XOPXY

6.6 NM 2.4 NM 1.2 NM 1.3 NM 0.5

CATEGORY	A	B	C	D
LPV DA	343-1		288 (300-1)	
LNAV/VNAV DA	587-1⅞		532 (600-1⅞)	
LNAV MDA	520-1	465 (500-1)	520-1⅜ 465 (500-1⅜)	
CIRCLING	520-1 465 (500-1)	580-1 525 (600-1)	NA	

ELEV 55 TDZE 55

179°

81

5000 X 75

36

MIRL Rwy 18-36 ①