

APP CRS
122°

Rwy Ldg
TDZE
Apt Elev

4020
2426
2434

RNAV (GPS) RWY 12

SCOBEY (9S2)

RNP APCH - GPS.

VDP NA when using PWD altimeter setting. Circling Rwy 30

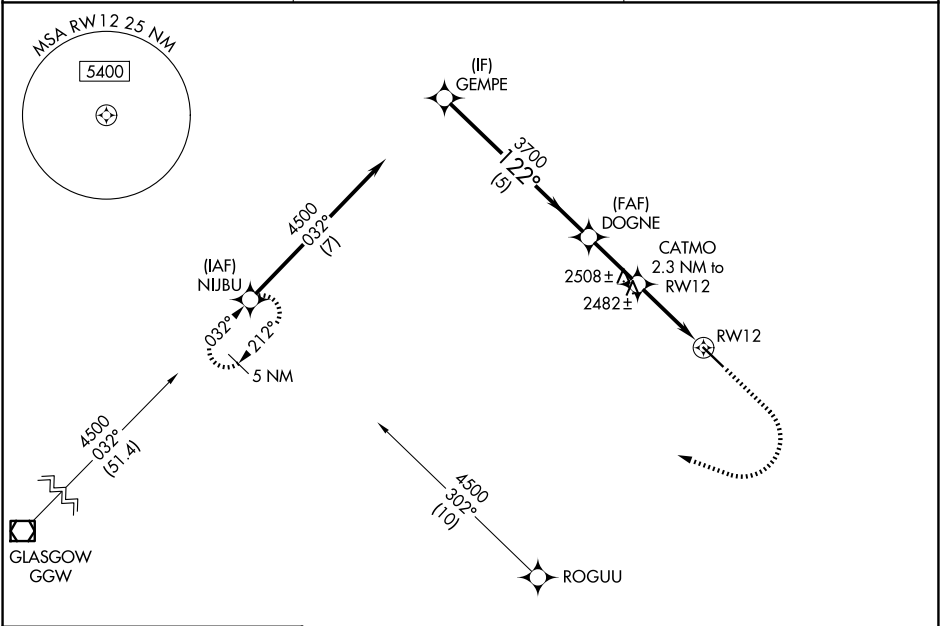
NA at night. When local altimeter setting not received, use PWD altimeter setting and increase all MDAs 120 feet.

MISSED APPROACH: Climb to 2900 then climbing right turn to 4500 direct NIJBU and hold.

AWOS-3PT
128.325

SALT LAKE CITY CENTER
126.85 305.2

AUNICOM
122.8 (CTAF)



ELEV 2434

TDZE 2426

122°

1.1% UP

4020 X 75

30

GEMPE

4500

122°

3700

3160

5 NM

1.7 NM

1.3 NM

1 NM

VGSI and descent angles not coincident (VGSI Angle 3.00/TCH 25).

DOGNE

CATMO 2.3 NM to RWY12

1 NM to RWY12

2900

4500

NIJBU

3.00° TCH 40

1.1% UP

4020 X 75

30

CATEGORY	A	B	C	D
LNAV MDA	2740-1	314 (400-1)	NA	NA
CIRCLING	2940-1	506 (600-1)	NA	NA

MIRL Rwy 12-30