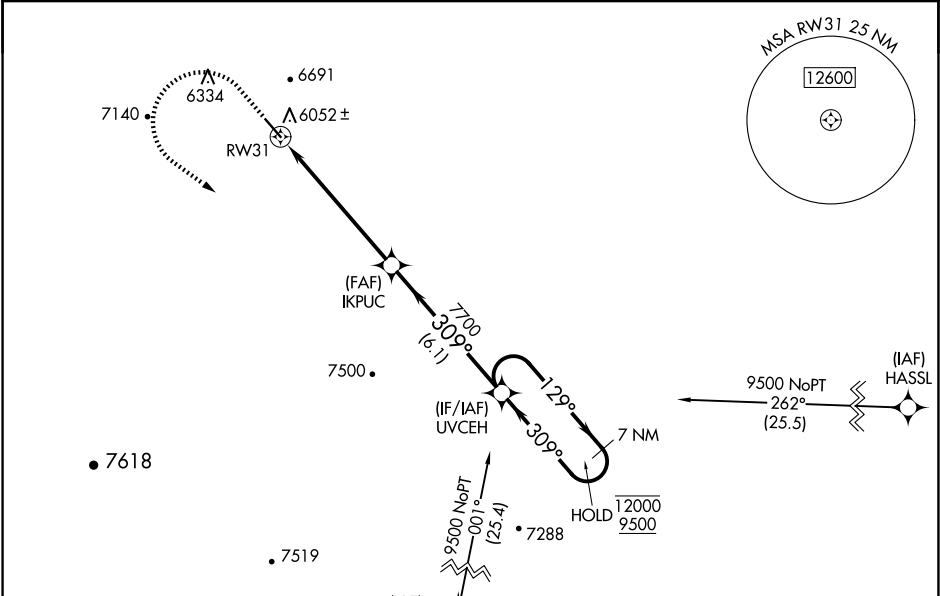


|         |          |      |
|---------|----------|------|
| APP CRS | Rwy Ldg  | 5032 |
| 309°    | TDZE     | 5723 |
|         | Apt Elev | 5737 |

RNAV (GPS) RWY 31  
ESCALANTE MUNI (1L7)

|   |   |
|---|---|
| RNP APCH - GPS.   | MISSED APPROACH: Climb to 7600 then climbing left turn to 9500 direct UVCEH and hold, continue climb-in-hold to 9500.<br>*Missed approach requires minimum climb of 328 feet per NM to 8000.<br>#Missed approach requires minimum climb of 320 feet per NM to 8020. |
| Baro-VNAV NA. Rwy 31 helicopter visibility reduction below 3/4 SM NA. Circling NA northeast of Rwy 13-31. Procedure NA at night. Use PGA altimeter setting. |   |

|                     |                                  |                          |
|---------------------|----------------------------------|--------------------------|
| PGA ASOS<br>120.625 | SALT LAKE CENTER<br>133.6 269.25 | UNICOM<br>122.8 (CTAF) 0 |
|---------------------|----------------------------------|--------------------------|



ELEV 5737

TDZE 5723

7600

9500

UVCEH

IKPUC

7700

UVCEH

7 NM Holding Pattern

12000

9500

GP 3.00°

TCH 36

7600

9500

UVCEH

IKPUC

7700

UVCEH

7 NM Holding Pattern

12000

9500

GP 3.00°

TCH 36

7600

9500

UVCEH

IKPUC

7700

UVCEH

7 NM Holding Pattern

12000

9500

GP 3.00°

TCH 36

7600

9500

UVCEH

IKPUC

7700

UVCEH

7 NM Holding Pattern

12000

9500

GP 3.00°

TCH 36

7600

9500

UVCEH

IKPUC

7700

UVCEH

7 NM Holding Pattern

12000

9500

GP 3.00°

TCH 36

7600

9500

UVCEH

IKPUC

7700

UVCEH

7 NM Holding Pattern

12000

9500

GP 3.00°

TCH 36

7600

9500

UVCEH

IKPUC

7700

UVCEH

7 NM Holding Pattern

12000

9500

GP 3.00°

TCH 36

7600

9500

UVCEH

IKPUC

7700

UVCEH

7 NM Holding Pattern

12000

9500

GP 3.00°

TCH 36

7600

9500

UVCEH

IKPUC

7700

UVCEH

7 NM Holding Pattern

12000

9500

GP 3.00°

TCH 36

7600

9500

UVCEH

IKPUC

7700

UVCEH

7 NM Holding Pattern

12000

9500

GP 3.00°

TCH 36

7600

9500

UVCEH

IKPUC

7700

UVCEH

7 NM Holding Pattern

12000

9500

GP 3.00°

TCH 36

7600

9500

UVCEH

IKPUC

7700

UVCEH

7 NM Holding Pattern

12000

9500

GP 3.00°

TCH 36

7600

9500

UVCEH

IKPUC

7700

UVCEH

7 NM Holding Pattern

12000

9500

GP 3.00°

TCH 36

7600

9500

UVCEH

IKPUC

7700

UVCEH

7 NM Holding Pattern

12000

9500

GP 3.00°

TCH 36

7600

9500

UVCEH

IKPUC

7700

UVCEH

7 NM Holding Pattern

12000

9500

GP 3.00°

TCH 36

7600

9500

UVCEH

IKPUC

7700

UVCEH

7 NM Holding Pattern

12000

9500

GP 3.00°

TCH 36

7600

9500

UVCEH

IKPUC

7700

UVCEH

7 NM Holding Pattern

12000

9500

GP 3.00°

TCH 36

7600

9500

UVCEH

IKPUC

7700

UVCEH

7 NM Holding Pattern

12000

9500

GP 3.00°

TCH 36

7600

9500

UVCEH

IKPUC

7700

UVCEH

7 NM Holding Pattern

12000

9500

GP 3.00°

TCH 36

7600

9500

UVCEH

IKPUC

7700

UVCEH

7 NM Holding Pattern

12000

9500

GP 3.00°

TCH 36

7600

9500

UVCEH

IKPUC

7700

UVCEH

7 NM Holding Pattern

12000

9500

GP 3.00°

TCH 36

7600

9500

UVCEH

IKPUC

7700

UVCEH

7 NM Holding Pattern

12000

9500

GP 3.00°

TCH 36

7600

9500

UVCEH

IKPUC

7700

UVCEH

7 NM Holding Pattern

12000

9500

GP 3.00°

TCH 36

7600

9500

UVCEH

IKPUC

7700

UVCEH

7 NM Holding Pattern

12000

9500

GP 3.00°

TCH 36

7600

9500

UVCEH

IKPUC

7700

UVCEH

7 NM Holding Pattern

12000

9500

GP 3.00°

TCH 36

7600

9500

UVCEH

IKPUC

7700

UVCEH

7 NM Holding Pattern

12000

9500

GP 3.00°

TCH 36

7600

9500

UVCEH

IKPUC

7700

UVCEH

7 NM Holding Pattern

12000

9500

GP 3.00°

TCH 36

7600

9500

UVCEH

IKPUC

7700

UVCEH

7 NM Holding Pattern

12000

9500

GP 3.00°

TCH 36

7600

9500

UVCEH

IKPUC

7700

UVCEH

7 NM Holding Pattern

12000

9500

GP 3.00°

TCH 36

7600

9500

UVCEH

IKPUC

7700

UVCEH

7 NM Holding Pattern

12000

9500

GP 3.00°

TCH 36

7600

9500

UVCEH

IKPUC

7700

UVCEH

7 NM Holding Pattern

12000

9500

GP 3.00°

TCH 36

7600

9500

UVCEH

IKPUC

7700

UVCEH

7 NM Holding Pattern

12000

9500

GP 3.00°

TCH 36

7600

9500

UVCEH

IKPUC

7700

UVCEH

7 NM Holding Pattern

12000

9500

GP 3.00°

TCH 36

7600

9500

UVCEH

IKPUC

7700

UVCEH

7 NM Holding Pattern

12000

9500

GP 3.00°

TCH 36

7600

9500

UVCEH

IKPUC

7700

UVCEH

7 NM Holding Pattern

12000

9500

GP 3.00°

TCH 36

7600

9500

UVCEH

IKPUC

7700

UVCEH

7 NM Holding Pattern

12000

9500

GP 3.00°

TCH 36

7600

9500

UVCEH

IKPUC

7700

UVCEH

7 NM Holding Pattern

12000

9500

GP 3.00°

TCH 36

7600

9500

UVCEH

IKPUC

7700

UVCEH

7 NM Holding Pattern

12000

9500

GP 3.00°

TCH 36

7600

9500

UVCEH

IKPUC

7700

UVCEH

7 NM Holding Pattern

12000

9500

GP 3.00°

TCH 36

7600

9500

UVCEH

IKPUC

7700

UVCEH

7 NM Holding Pattern

12000

9500

GP 3.00°

TCH 36

7600

9500

UVCEH

IKPUC

7700

UVCEH

7 NM Holding Pattern

12000

9500

GP 3.00°

TCH 36

7600

9500

UVCEH

IKPUC

7700

UVCEH

7 NM Holding Pattern

12000

9500

GP 3.00°

TCH 36

7600

9500

UVCEH

IKPUC

7700

UVCEH

7 NM Holding Pattern

12000

9500

GP 3.00°

TCH 36

7600

9500

UVCEH

IKPUC

7700

UVCEH

7 NM Holding Pattern

12000

9500

GP 3.00°

TCH 36

7600

9500

UVCEH

IKPUC

7700

UVCEH

7 NM Holding Pattern

12000

9500

GP 3.00°

TCH 36

7600

9500

UVCEH

IKPUC

7700

UVCEH

7 NM Holding Pattern

12000

9500

GP 3.00°

TCH 36

7600

9500

UVCEH

IKPUC

7700

UVCEH

7 NM Holding Pattern

12000

9500

GP 3.00°

TCH 36

7600

9500

UVCEH

IKPUC

7700

UVCEH

7 NM Holding Pattern

12000

9500

GP 3.00°

TCH 36

7600

9500

UVCEH

IKPUC

7700

UVCEH

7 NM Holding Pattern

12000

9500

GP 3.00°

TCH 36

7600

9500

UVCEH

IKPUC

7700

UVCEH

7 NM Holding Pattern

12000

9500

GP 3.00°

TCH 36

7600

9500

UVCEH

IKPUC

7700

UVCEH

7 NM Holding Pattern

12000

9500

GP 3.00°

TCH 36

7600

9500

UVCEH

IKPUC

7700

UVCEH

7 NM Holding Pattern

12000

9500

GP 3.00°

TCH 36

7600

9500

UVCEH

IKPUC

7700

UVCEH

7 NM Holding Pattern

12000

9500

GP 3.00°

TCH 36

7600

9500

UVCEH

IKPUC

7700

UVCEH

7 NM Holding Pattern

12000

9500

GP 3.00°

TCH 36

7600

9500

UVCEH

IKPUC

7700

UVCEH

7 NM Holding Pattern

12000

9500

GP 3.00°

TCH 36

7600

9500

UVCEH

IKPUC

7700

UVCEH

7 NM Holding Pattern

12000

9500

GP 3.00°

TCH 36

7600

9500

UVCEH

IKPUC

7700

UVCEH

7 NM Holding Pattern

12000

9500

GP 3.00°

TCH 36

7600

9500

UVCEH

IKPUC

7700

UVCEH

7 NM Holding Pattern

12000

9500

GP 3.00°

TCH 36

7600

9500

UVCEH

IKPUC

7700

UVCEH

7 NM Holding Pattern

12000

9500

GP 3.00°

TCH 36

7600

9500

UVCEH

IKPUC

7700

UVCEH

7 NM Holding Pattern

12000

9500

GP 3.00°

TCH 36

7600

9500

UVCEH

IKPUC

7700

UVCEH

7 NM Holding Pattern

12000

9500

GP 3.00°

TCH 36

7600

9500

UVCEH

IKPUC

7700

UVCEH

7 NM Holding Pattern

12000

9500

GP 3.00°

TCH 36

7600

9500

UVCEH

IKPUC

7700

UVCEH

7 NM Holding Pattern

12000

9500

GP 3.00°

TCH 36

7600

9500

UVCEH

IKPUC

7700

UVCEH

7 NM Holding Pattern

12000

9500

GP 3.00°

TCH 36

7600

9500

UVCEH

IKPUC

7700

UVCEH

7 NM Holding Pattern

12000

9500

GP 3.00°

TCH 36

7600

9500

UVCEH

IKPUC

7700

UVCEH

7 NM Holding Pattern

12000

9500

GP 3.00°

TCH 36

7600

9500

UVCEH

IKPUC

7700

UVCEH

7 NM Holding Pattern

12000

9500

GP 3.00°

TCH 36

7600

9500

UVCEH

IKPUC

7700

UVCEH

7 NM Holding Pattern

12000

9500

GP 3.00°

TCH 36

7600

9500

UVCEH

IKPUC

7700

UVCEH

7 NM Holding Pattern

12000

9500

GP 3.00°

TCH 36

7600

9500

UVCEH

IKPUC

7700

UVCEH

7 NM Holding Pattern

12000

9500

GP 3.00°

TCH 36

7600

9500

UVCEH

IKPUC

7700

UVCEH

7 NM Holding Pattern

12000

9500

GP 3.00°

TCH 36

7600

9500

UVCEH

IKPUC

7700

UVCEH

7 NM Holding Pattern

12000

9500

GP 3.00°

TCH 36

7600

9500

UVCEH

IKPUC

7700

UVCEH

7 NM Holding Pattern

12000

9500

GP 3.00°

TCH 36

7600

9500

UVCEH

IKPUC

7700

UVCEH

7 NM Holding Pattern

12000

9500

GP 3.00°

TCH 36

7600

9500

UVCEH

IKPUC

7700

UVCEH

7 NM Holding Pattern

12000

9500

GP 3.00°

TCH 36

7600

9500

UVCEH

IKPUC

7700

UVCEH

7 NM Holding Pattern

12000

9500

GP 3.00°

TCH 36

7600

9500

UVCEH

IKPUC

7700

UVCEH

7 NM Holding Pattern

12000

9500

GP 3.00°

TCH 36

7600

9500

UVCEH

IKPUC

7700

UVCEH

7 NM Holding Pattern

12000

9500

GP 3.00°

TCH 36

7600

9500

UVCEH

IKPUC

7700

UVCEH

7 NM Holding Pattern

12000

9500

GP 3.00°

TCH 36

7600

9500

UVCEH

IKPUC

7700

UVCEH

7 NM Holding Pattern

12000

9500

GP 3.00°

TCH 36

7600

9500

UVCEH

IKPUC

7700

UVCEH

7 NM Holding Pattern

12000

9500

GP 3.00°

TCH 36

7600

9500

UVCEH

IKPUC

7700

UVCEH

7 NM Holding Pattern

12000

9500

GP 3.00°

TCH 36

7600

9500

UVCEH

IKPUC

7700

UVCEH

7 NM Holding Pattern

12000

9500

GP 3.00°

TCH 36

7600

9500

UVCEH

IKPUC

7700

UVCEH

7 NM Holding Pattern

12000

9500

GP 3.00°

TCH 36

7600

9500

UVCEH

IKPUC

7700

UVCEH

7 NM Holding Pattern

12000

9500

GP 3.00°

TCH 36

7600

9500

UVCEH

IKPUC

7700

UVCEH

7 NM Holding Pattern

12000

9500

GP 3.00°

TCH 36

7600

9500

UVCEH

IKPUC

7700

UVCEH

7 NM Holding Pattern

12000

9500

GP 3.00°

TCH 36

7600

9500

UVCEH

IKPUC

7700

UVCEH

7 NM Holding Pattern

12000

9500

GP 3.00°

TCH 36

7600

9500

UVCEH

IKPUC

7700

UVCEH

7 NM Holding Pattern

12000

9500

GP 3.00°

TCH 36

7600

9500

UVCEH

IKPUC

7700

UVCEH

7 NM Holding Pattern

12000

9500

GP 3.00°

TCH 36

7600

9500

UVCEH

IKPUC

7700

UVCEH

7 NM Holding Pattern

12000

9500

GP 3.00°

TCH 36

7600

9500

UVCEH

IKPUC

7700

UVCEH

7 NM Holding Pattern

12000

9500

GP 3.00°

TCH 36

7600

9500

UVCEH

IKPUC

7700

UVCEH

7 NM Holding Pattern

12000

9500

GP 3.00°

TCH 36

7600

9500

UVCEH

IKPUC

7700

UVCEH

7 NM Holding Pattern

12000

9500

GP 3.00°

TCH 36

7600

9500

UVCEH

IKPUC

7700

UVCEH

7 NM Holding Pattern

12000

9500

GP 3.00°

TCH 36

7600

9500

UVCEH

IKPUC

7700

UVCEH

7 NM Holding Pattern

12000

9500

GP 3.00°

TCH 36

7600

9500

UVCEH

IKPUC

7700

UVCEH

7 NM Holding Pattern

12000

9500

GP 3.00°

TCH 36

7600

9500

UVCEH

IKPUC

7700

UVCEH

7 NM Holding Pattern

12000

9500

GP 3.00°

TCH 36

7600

9500

UVCEH

IKPUC

7700

UVCEH

7 NM Holding Pattern

12000

9500

GP 3.00°

TCH 36

7600

9500

UVCEH

IKPUC

7700

UVCEH

7 NM Holding Pattern

12000

9500

GP 3.00°

TCH 36

7600

9500

UVCEH

IKPUC

7700

UVCEH

7 NM Holding Pattern

12000

9500

GP 3.00°

TCH 36

7600

9500

UVCEH

SW-4, 07 AUG 2025 to 04 SEP 2025

SW-4, 07 AUG 2025 to 04 SEP 2025