

WAAS CH <b>63221</b> <b>W17A</b>	APP CRS <b>168°</b>	Rwy Ldg TDZE <b>5005</b> Apt Elev <b>5022</b>
--	------------------------	---

RNAV (GPS) RWY 17

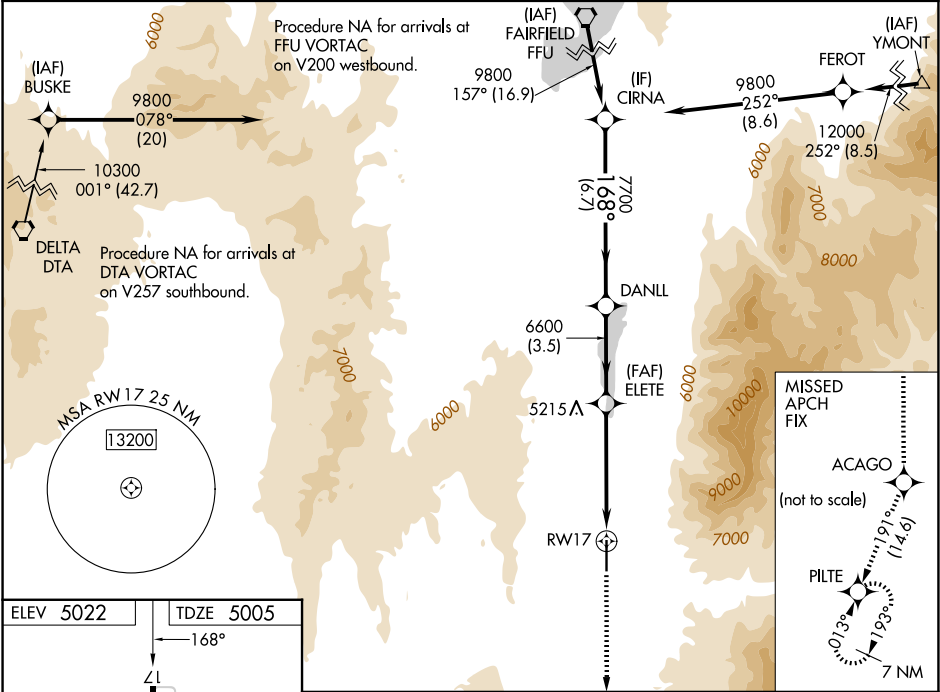
NEPHI MUNI (U14)

RNP APCH - GPS.

Baro-VNAV NA when using Provo Muni altimeter setting. For uncompensated Baro-VNAV systems, LNAV/VNAV NA below -24°C or above 12°C. When local altimeter setting not received, use Provo altimeter setting: increase LPV DA to 5577 feet and visibility all Cats ½ SM, increase LNAV/VNAV DA to 5836 feet and visibility all Cats ½ SM; increase all MDAs 160 feet and LNAV and Circling visibilities Cats A/B ½ SM. Circling Cat C NA. VDP NA with Provo Muni altimeter setting.

MISSED APPROACH:  
Climb to 11400 direct ACAGO and on track 191° to PILTE and hold.

AWOS-3PT <b>118.275</b>	SALT LAKE CENTER <b>127.825 239.025</b>	UNICOM <b>123.075 (CTAF) 0</b>
----------------------------	--	-----------------------------------



ELEV 5022

TDZE 5005

168°

ZL

0.6% Up

6300 X 100

35

MIRL Rwy 17-35

REIL Rwy 17 and 35

11400	ACAGO	tr 191°	PILTE	CIRNA
*LNAV only.      *2.4 NM to RW17				
CATEGORY	A	B	C	D
LPV DA	5433-1½ 428 (500-1½)			
LNAV/VNAV DA	5692-2½ 687 (700-2½)			
LNAV MDA	5800-1 795 (800-1)	5800-1¼ 795 (800-1¼)	5800-2½ 795 (800-2½)	795 (800-2½)
CIRCLING	5800-1 778 (800-1)	5800-1¼ 778 (800-1¼)	6920-3 1898 (1900-3)	NA