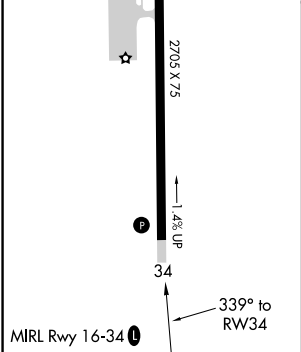
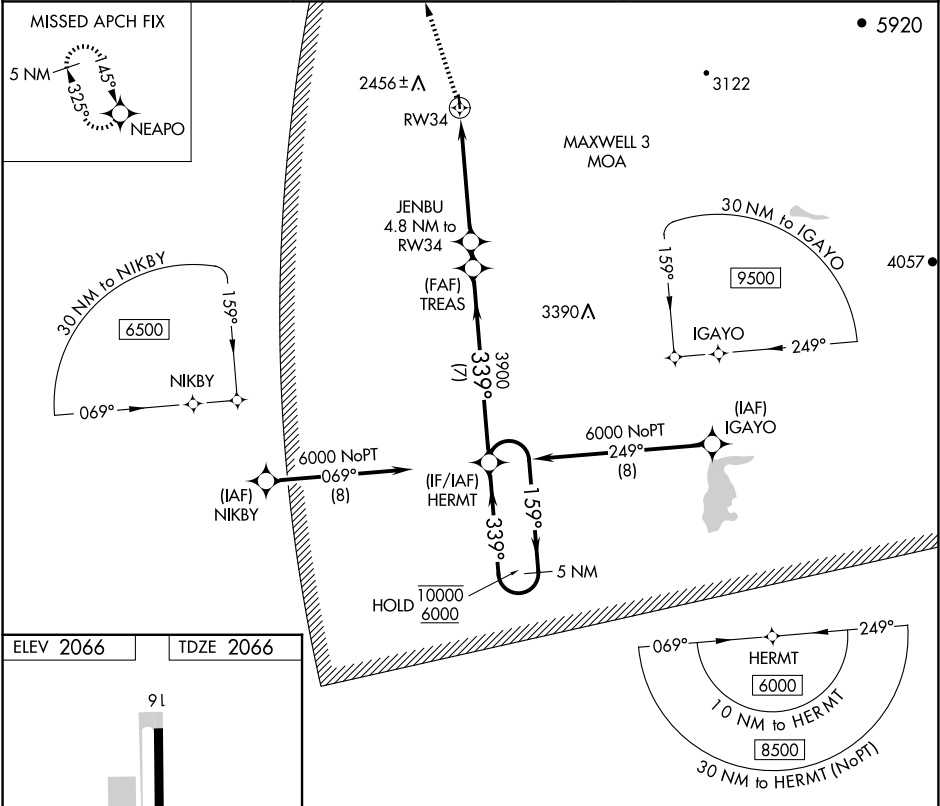


APP CRS	Rwy Idg	2705
339°	TDZE	2066
	Apt Elev	2066

RNAV (GPS) RWY 34  
ELLS FLD/WILLITS MUNI (O28)

RNP APCH - GPS.	MISSED APPROACH: Climb to 6100 direct NEAPO and hold, continue climb-in-hold to 6100.
NA	

UKI ASOS 119.275	OAKLAND CENTER 132.2 350.3	UNICOM 122.8 (CTAF) 0
---------------------	-------------------------------	--------------------------



6100	NEAPO	VGSI and descent angles not coincident (VGSI Angle 3.00/TCH 21).	HERMT	5 NM Holding Pattern
JENBU 4.8 NM to RW34	TREAS	HERMT	159° → 10000 ← 339° 6000	
3600	3900			
4.8 NM	0.9 NM	7 NM		
CATEGORY	A	B	C	D
LNAV MDA	3060-1¼ 994 (1000-1¼)	3060-1½ 994 (1000-1½)	3060-3 994 (1000-3)	NA
CIRCLING	3060-1¼ 994 (1000-1¼)	3060-1½ 994 (1000-1½)	3580-3 1514 (1600-3)	NA

SW-2, 07 AUG 2025 to 04 SEP 2025

SW-2, 07 AUG 2025 to 04 SEP 2025