


APP CRS  
**004°**


Rwy Ldg TDZE  
Apt Elev  
**N/A**  
**N/A**  
**3636**

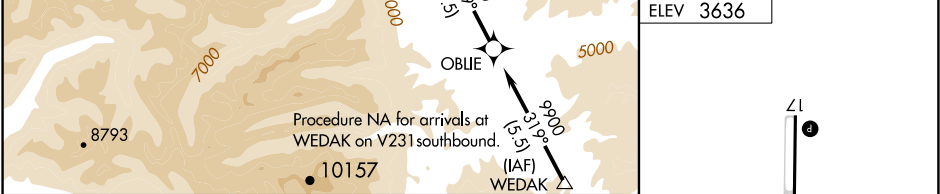
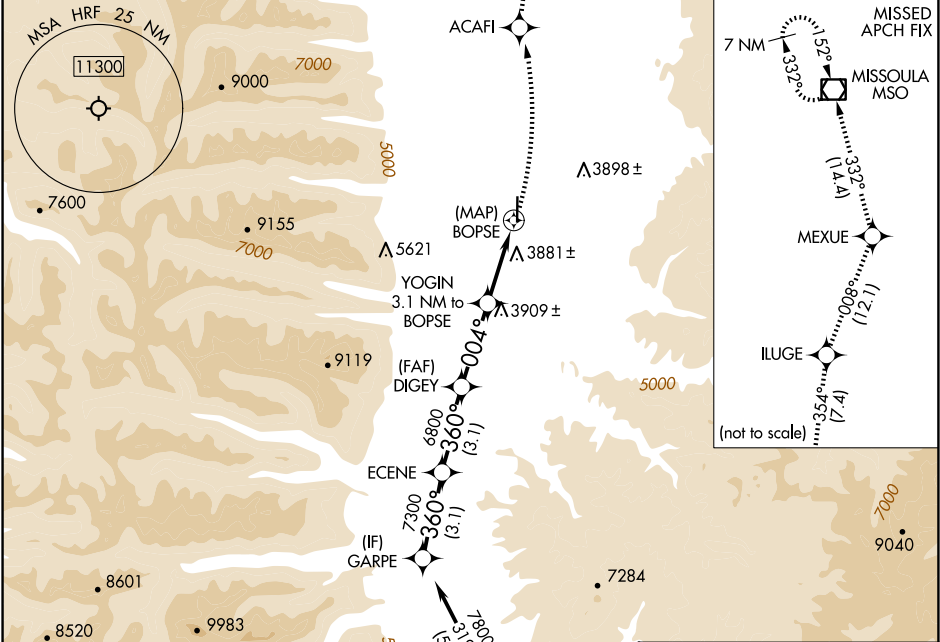
**RNAV (GPS)-A**  
RAVALLI COUNTY (HRF')


**RNP APCH-GPS.**

 Circling to Rwy 35 NA at night. Rwy 35 helicopter visibility reduction below 1 SM NA.

**MISSED APPROACH:** Climbing left turn to 11200 direct ACAFI and on track 354° to ILUGE and track 008° to MEXUE and track 332° to MISSOULA VOR/DME and hold.

AWOS-3P <b>119.825</b>	SALT LAKE CENTER <b>132.4 338.3</b>	UNICOM <b>122.8 (CTAF)</b> 
---------------------------	--	---



GARPE		11200	ACAFL	tr	354°	ILUGE	tr	008°	MEXUE	tr	332°	MSO
ECENE												
DIGEY												
YOGIN 3.1 NM to BOPSE												
BOPSE												
3.1 NM												
3.1 NM												
3.1 NM												
3.1 NM												
CATEGORY	A	B	C									
 CIRCLING	4240-1	4260-1	NA									
	604 (700-1)	624 (700-1)										