

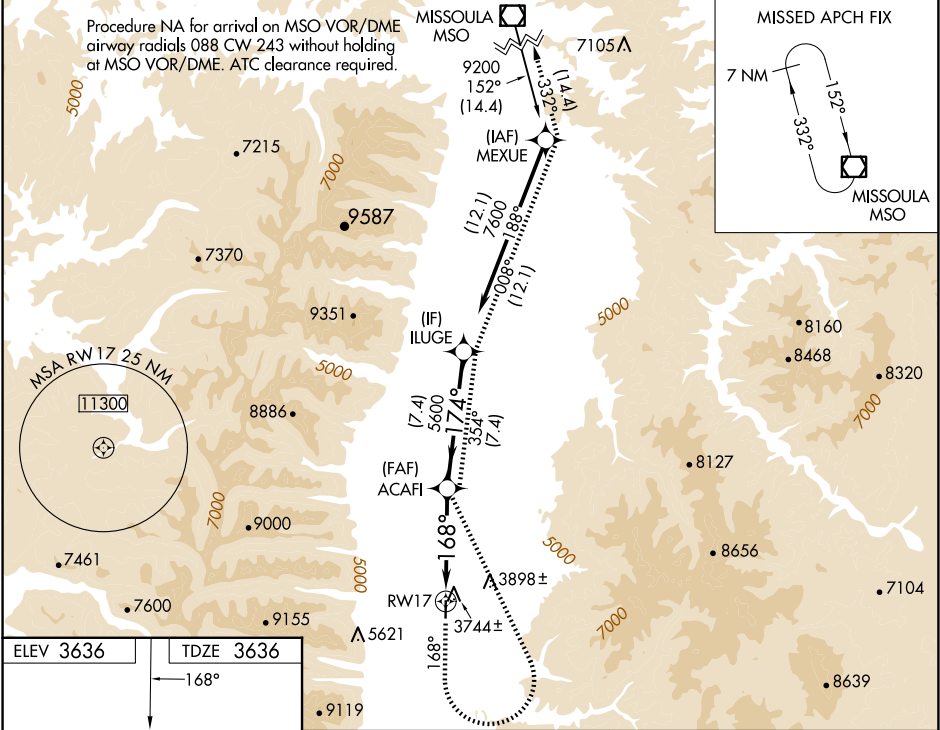
WAAS CH <b>60945</b> <b>W17A</b>	APP CRS <b>168°</b>	Rwy Ldg TDZE Apt Elev	<b>5200</b> <b>3636</b> <b>3636</b>
--	------------------------	-----------------------------	---

RNAV (GPS) RWY 17

RAVALLI COUNTY (HRF')

RNP APCH-GPS.		MISSED APPROACH: (Do not exceed 130K until ACAFI) Climb to 4100 on 168° then climbing left turn to 11200 direct ACAFI and track 354° to ILUGE and track 008° to MEXUE and track 332° to MISSOULA VOR/DME and hold.
Circling Rwy 35 NA at night. For uncompensated Baro-VNAV systems, LNAV/VNAV NA below -22°C or above 54°C.		

AWOS-3P <b>119.825</b>	SALT LAKE CENTER <b>132.4 338.3</b>	UNICOM <b>122.8 (CTAF) 0</b>
---------------------------	--	---------------------------------



4100	11200	ACAFI	fr 354°	ILUGE	fr 008°	MEXUE	fr 332°	MSO	ILUGE
↑ tr 168°	↖	✧		✧	tr 008°	✧	fr 332°	☐	
<p>1.1 NM to RWY17</p> <p>ACAFI 5600</p> <p>168°</p> <p>174°</p> <p>7600</p> <p>5600</p> <p>GP 3.00° TCH 35</p> <p>1.1 NM</p> <p>5 NM</p> <p>7.4 NM</p>									
CATEGORY		A		B		C		D	
LPV	DA	3886-1		250 (300-1)				NA	
LNAV/VNAV	DA	3920-1 284 (300-1)		4084-1 <sup>3</sup> / <sub>8</sub> 448 (500-1 <sup>3</sup> / <sub>8</sub> )				NA	
LNAV	MDA	4020-1 384 (400-1)		4320-1 684 (700-1)				NA	
CIRCLING		4240-1 604 (700-1)		4320-1 684 (700-1)				NA	