

WAAS CH 72822 W03A	APP CRS 029°	Rwy Idg TDZE Apt Elev	6501 246 246
--	------------------------	-----------------------------	---

RNAV (GPS) RWY 3

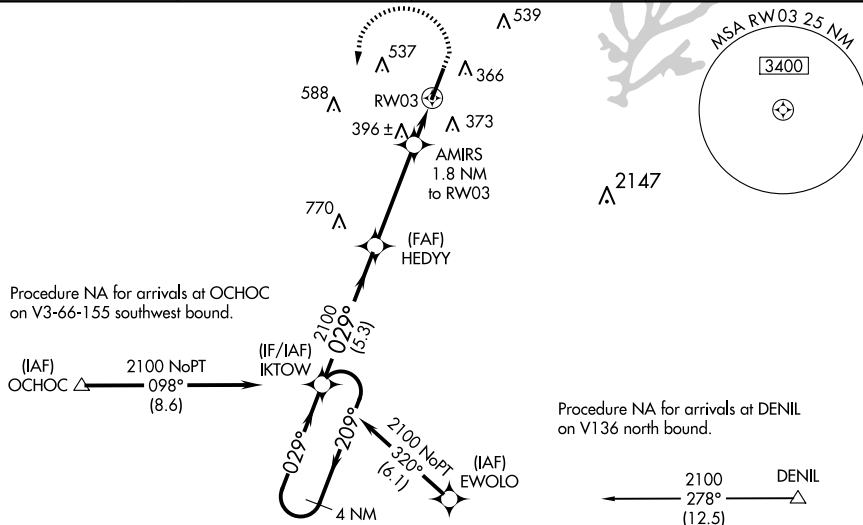
RALEIGH EXEC JETPORT AT SANFORD-LEE COUNTY (TTA)

V Baro-VNAV NA when using Raleigh/Durham altimeter setting. For uncompensated Baro-VNAV systems, LNAV/VNAV NA below -15°C (5°F) or above 54°C (130°F). DME/DME RNP-0.3 NA. **A** When local altimeter setting not received, use Raleigh/Durham altimeter setting and increase all DA 81 feet and all MDA 100 feet. Increase LNAV/VNAV all Cats visibility to 1½ mile, LNAV Cats C and D visibility to 1 mile, and Circling Cat C visibility to 2 mile and Cat D visibility to 2¾ mile. For inop MALSR, increase LNAV/VNAV all Cats visibility to 1¼ mile and LNAV Cats C and D visibility to 1 mile. For inop MALSR when using Raleigh/Durham altimeter setting, increase LPV all Cats visibility to ¾ mile and LNAV Cats C and D visibility to 1¾ mile. VDP NA when using Raleigh/Durham altimeter setting.

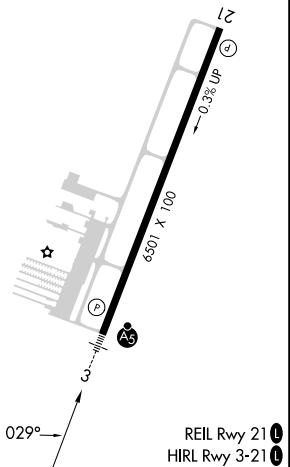
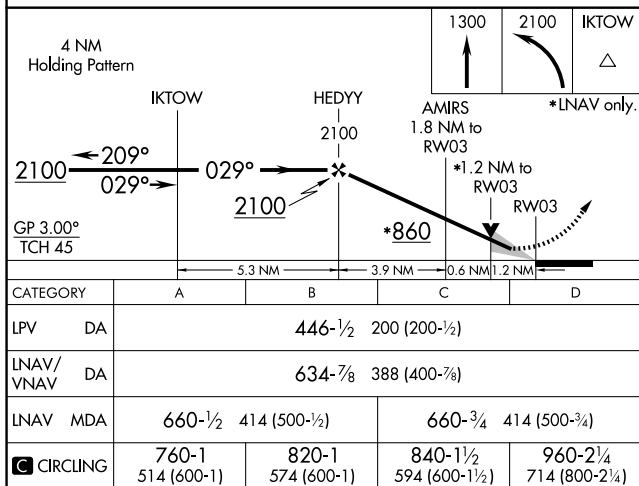
MALS

MISSED APPROACH:
Climb to 1300 then
climbing left turn to
2100 direct IKTOW
and hold.

AWOS-3 120.625	RALEIGH APP CON 125.3 353.675	UNICOM 123.075 (CTAF) 0	GCO 135.075
--------------------------	---	-----------------------------------	-----------------------



ELEV	246		TDZE	246
------	-----	--	------	-----



SANFORD, NORTH CAROLINA
Amdt 2 15OCT15

RALEIGH EXEC JETPORT AT SANFORD-LEE COUNTY (TTA)
35°35'N-79°06'W BNAV (CPS) BNAV 2

RNAV (GPS) RWY 3