

WAAS
CH **86522**
W21A

APP CRS
209°

Rwy Idg
TDZE
Apt Elev

6501
230
247

RNAV (GPS) RWY 21

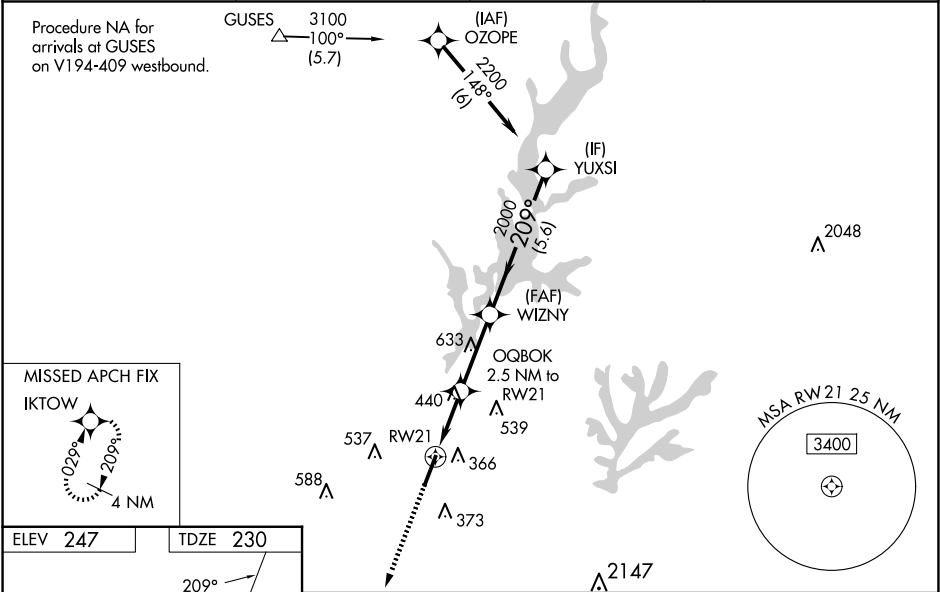
RALEIGH EXEC JETPORT AT SANFORD-LEE COUNTY (TTA)

RNP APCH.

Baro-VNAV NA when using Raleigh/Durham altimeter setting. For uncompensated Baro-VNAV systems, LNAV/VNAV NA below -15°C or above 54°C. When local altimeter setting not received, use Raleigh/Durham altimeter setting and increase all DA 81 feet and all MDA 100 feet. Increase LPV all Cats visibility to 1¼ SM, LNAV/VNAV all Cats visibility to 1½ SM, LNAV Cats C and D visibility to 1½ SM, and Circling Cat C visibility to 2 SM and Cat D visibility to 2¾ SM. Rwy 21 helicopter visibility reduction below ¾ SM NA. VDP NA when using Raleigh/Durham altimeter setting.

MISSED APPROACH:
Climb to 2100 direct
IKTOW and hold.

AWOS-3 120.625	RALEIGH APP CON 125.3 353.675	UNICOM 123.075 (CTAF) 0	GCO 135.075
--------------------------	---	-----------------------------------	-----------------------



ELEV 247

TDZE 230

209°

209°

0.6° Up

6501 X 100

REIL Rwy 21 0

HIRL Rwy 3-21 0

2100

IKTOW

VGSI and RNAV glidepath not coincident
(VGSI Angle 3.00/TCH 40).

*LNAV only.

OQBOK
2.5 NM to
RW21

*1.4 NM to
RW21

*1060

2000

2000

GP 3.00°
TCH 45

1.4 NM 1.1 NM 2.9 NM 5.6 NM

CATEGORY	A	B	C	D
LPV DA		530-1	300 (300-1)	
LNAV/VNAV DA		518-7⁄8	288 (300-7⁄8)	
LNAV MDA	700-1	470 (500-1)	700-1¾	470 (500-1¾)
CIRCLING	760-1 513 (600-1)	820-1 573 (600-1)	840-1½ 593 (600-1½)	960-2¼ 713 (800-2¼)