



LOC/DME I-TT <b>110.75</b> Chan <b>44</b> (Y)	APP CRS <b>029°</b>	Rwy Idg <b>6501</b> TDZE <b>247</b> Apt Elev <b>247</b>
---	------------------------	---

ILS Y or LOC Y RWY 3  
RALEIGH EXEC JETPORT AT SANFORD-LEE COUNTY (TTA)

RNAV 1-GPS required	
---------------------	--

RNAV 1-GPS or RADAR required for procedure entry.

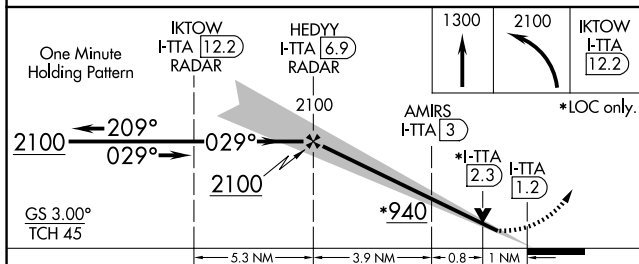
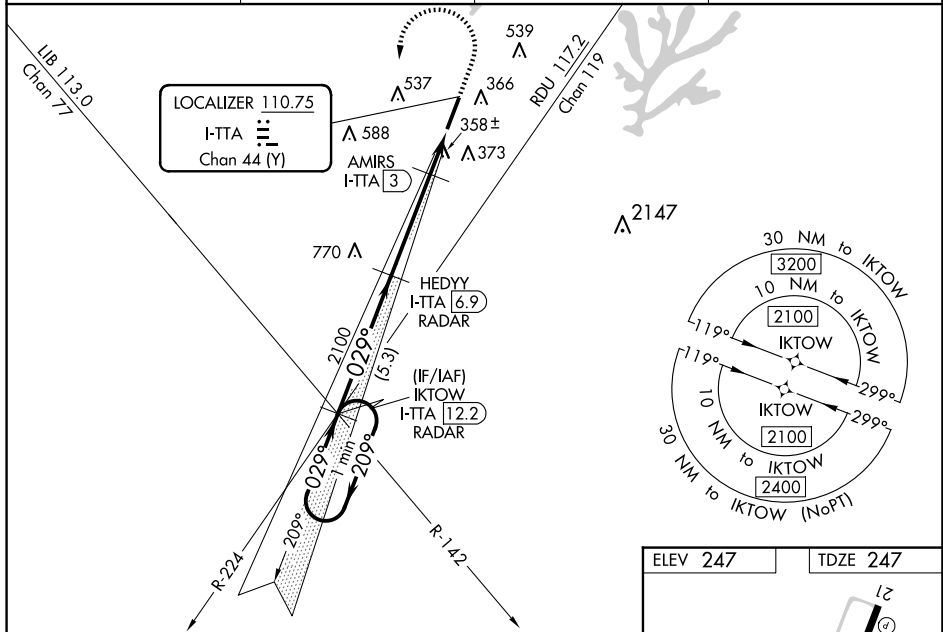
  NA When local altimeter setting not received, use Raleigh/Durham altimeter setting: increase DA to 527 feet; increase all MDAs 100 feet and S-LOC 3 Cats C and D visibility to 1 SM and Circling Cat C visibility to 2 SM and Cat D to 2 1/2 SM. For inop ALS, increase S-LOC 3 Cats C and D visibility to 1 SM. For inop ALS when using Raleigh/Durham altimeter setting, increase S-LS 3 all Cats visibility to 1/2 SM and increase S-LOC 3 Cats C and D visibility to 1 1/2 SM. VDP NA when using Raleigh/Durham altimeter setting.


MALSR

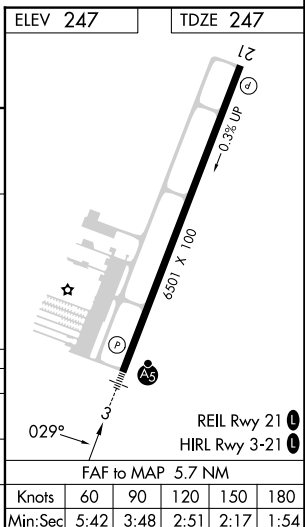


MISSED APPROACH: Climb to 1300 then climbing left turn to 2100 direct IKTOW INT/I-TTA 12.2 DME/RADAR and hold.

AWOS-3 <b>120.625</b>	RALEIGH APP CON <b>125.3 353.675</b>	UNICOM <b>123.075 (CTAF) 0</b>	GCO <b>135.075</b>
--------------------------	---	-----------------------------------	-----------------------



CATEGORY	A	B	C	D
S-ILS 3	447-1½ 200 (200-½)			
S-LOC 3	620-½	373 (400-½)	620-5⁄8	373 (400-5⁄8)
 CIRCLING	760-1 513 (600-1)	820-1 573 (600-1)	840-1½ 593 (600-1½)	960-2¼ 713 (800-2¼)



ILS Y or LOC Y RWY 3