




WAAS CH <b>57947</b> <b>W02A</b>	APP CRS <b>021°</b>	Rwy Idg <b>4000</b> TDZE <b>74</b> Apt Elev <b>75</b>
--	------------------------	---

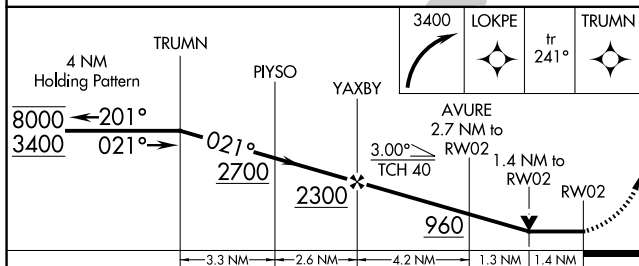
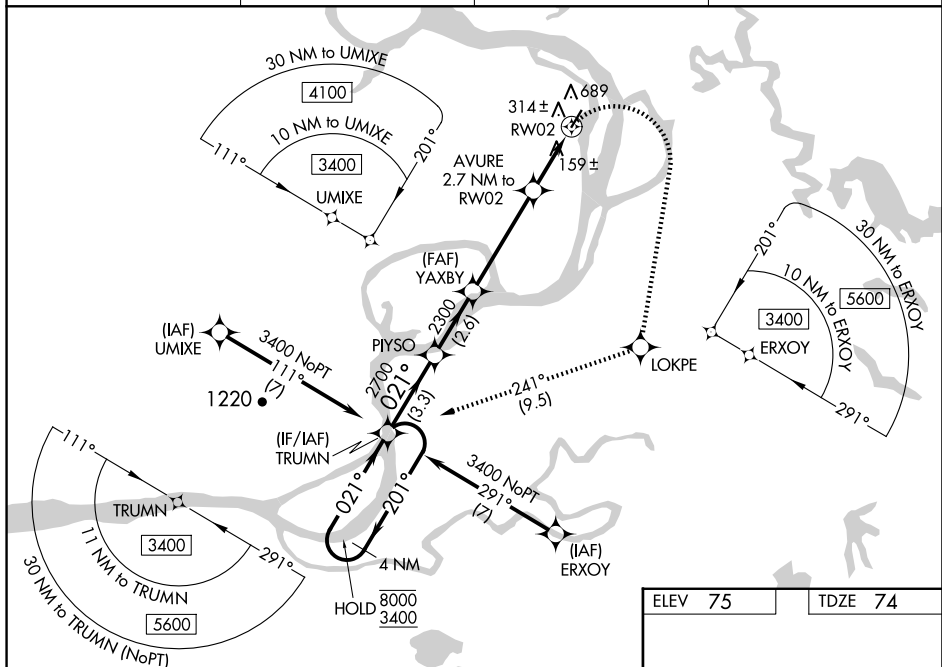
## RNAV (GPS) RWY 2

RNP APCH - GPS.

   -28°C	Circling Rwy 20 NA at night. Circling NA west of Rwy 2-20. Rwy 2 helicopter visibility reduction below $\frac{3}{4}$ SM NA. VDP NA when using Anvik altimeter setting. When local altimeter setting not received, use Anvik altimeter setting and increase all MDAs 120 feet and LNAV visibility Cat B, C and D $\frac{1}{2}$ SM, and LP visibility Cat C and D $\frac{3}{4}$ SM, and Circling all visibilities $\frac{1}{2}$ SM.
---	---

**MISSED APPROACH:** Climbing right turn to 3400 direct LOKPE and on track 241° to TRUMN and hold, continue climb-in-hold to 3400.

AWOS-3P <b>118.325</b>	ANCHORAGE CENTER <b>118.15 251.05</b>	KENAI RADIO <b>122.45</b>	CTAF <b>122.8 0</b>
---------------------------	--	------------------------------	------------------------



CATEGORY	A	B	C	D
LP MDA	560-1 486 (500-1)	560-1 $\frac{3}{8}$ 486 (500-1 $\frac{3}{8}$ )		
LNAV MDA	800-1 726 (800-1)	800-2 726 (800-2)		
CIRCLING	800-1 725 (800-1)	800-2 725 (800-2)	800-2 $\frac{1}{4}$ 725 (800-2 $\frac{1}{4}$ )	

