

24305

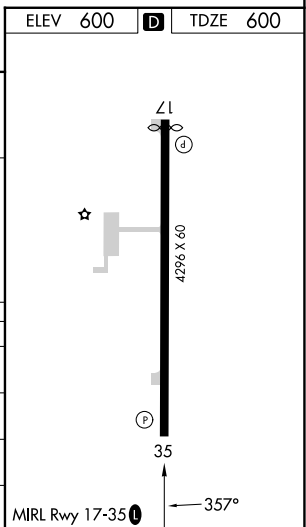
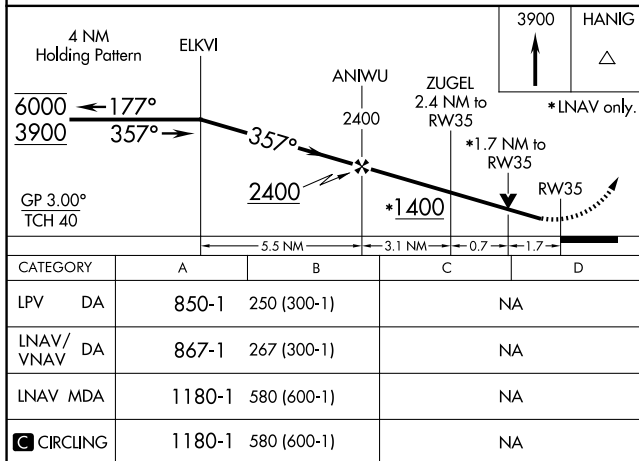
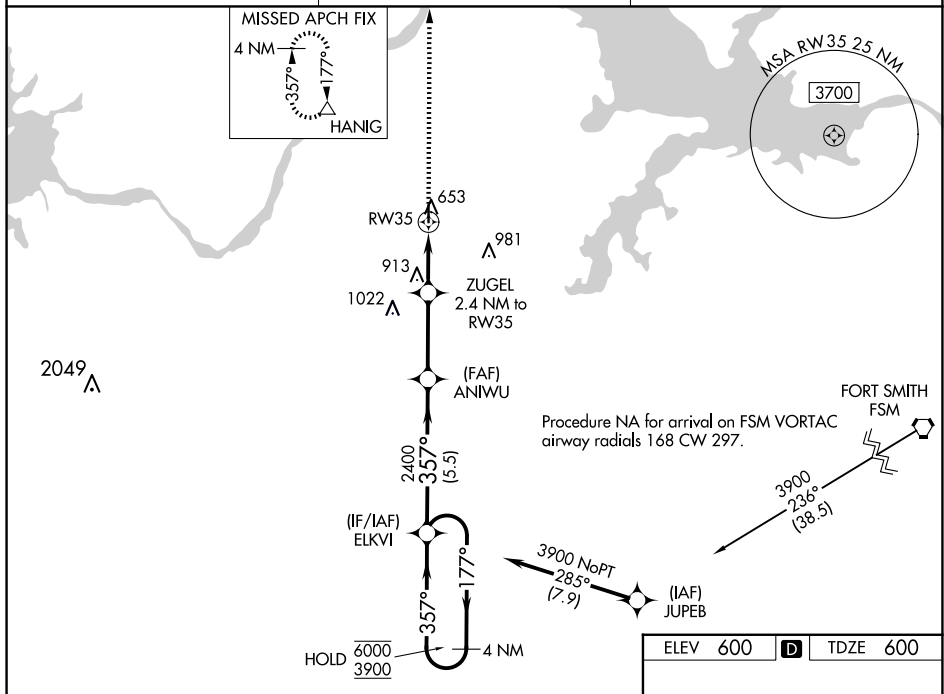
RNAV (GPS) RWY 35  
STIGLER RGNL (GZL)

**T** Circling Rwy 17 NA at night. Rwy 35 helicopter visibility reduction  
**A** below  $\frac{3}{4}$  SM NA. For uncompensated Baro-VNAV systems,  
LNAV/VNAV NA below -16°C or above 54°C.

**MISSED APPROACH:** Climb to 3900 direct HANIG and hold.

CTAF

122.9 L



STIGLER RGNL (GZL)

35°17'N-95°06'W

RNAV (GPS) RWY 35

SC-1, 07 AUG 2025 to 04 SEP 2025