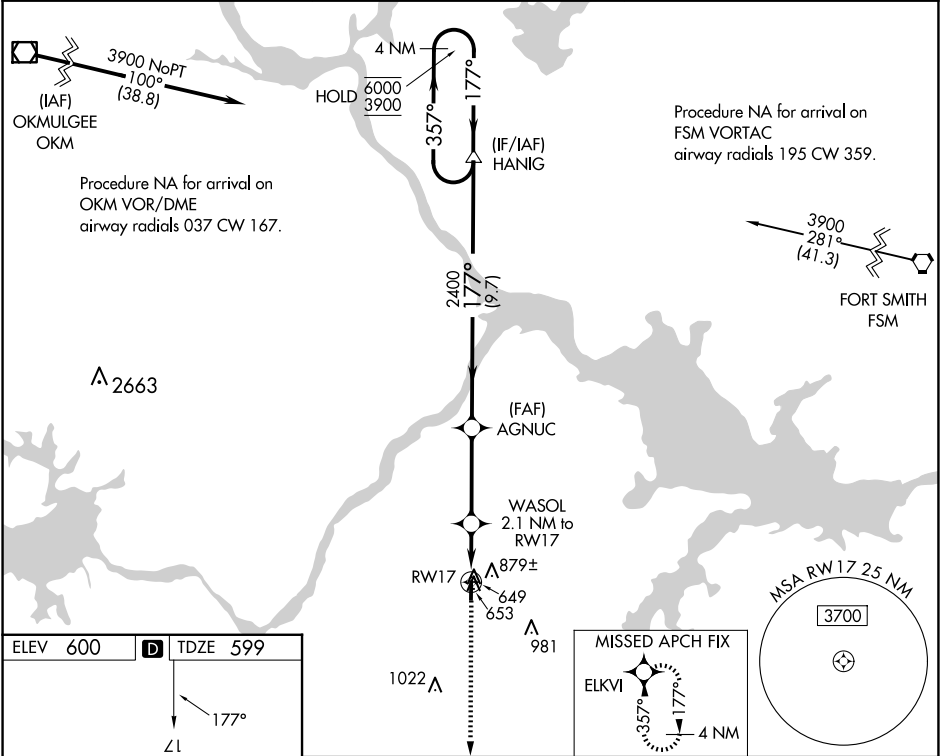


RNP APCH.	MISSED APPROACH: Climb to 3900 direct ELKVI and hold, continue climb-in-hold to 3900.
Rwy 17 helicopter visibility reduction below 1 SM NA. Procedure NA at night.	

AWOS-3PT 118.575	FORT WORTH CENTER 132.2 338.35	CTAF 122.90
----------------------------	--	-----------------------



ELEV 600	D	TDZE 599				
MIRL Rwy 17-35						
Visual Segment - Obstacles.						
HANIG Holding Pattern						
4 NM						
357° → 6000 ← 177° 3900						
2.1 NM 3.4 NM 9.7 NM						
CATEGORY	A		B		C	
LP MDA	900-1 301 (300-1)				NA	
LNAV MDA	1020-1 421 (500-1)				NA	
CIRCLING	1180-1 580 (600-1)				NA	