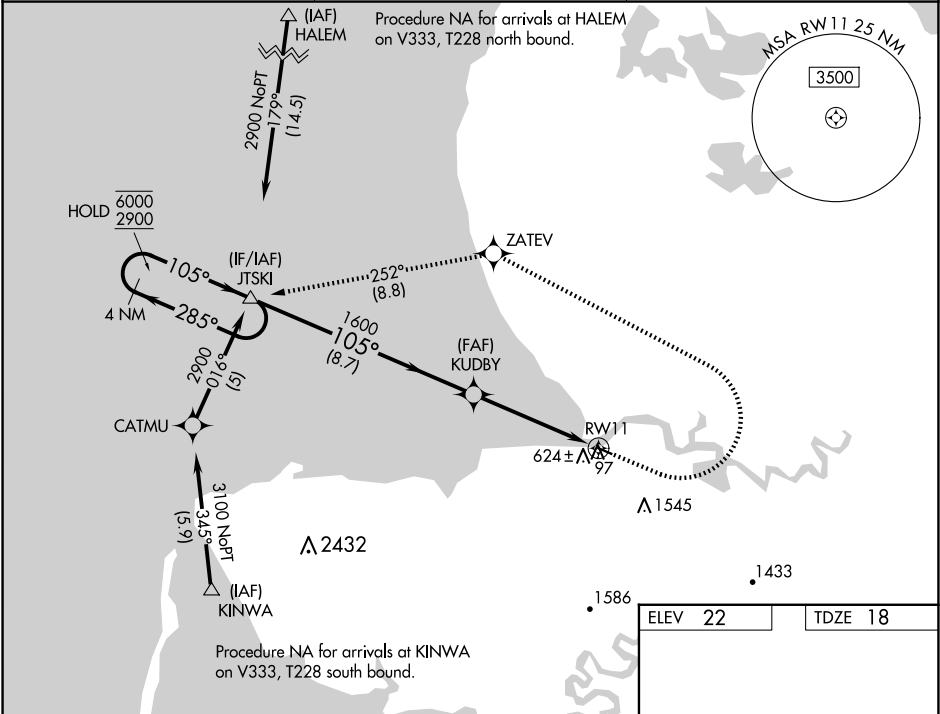


WAAS CH <b>77548</b> <b>W11A</b>	APP CRS <b>105°</b>	Rwy Idg TDZE Apt Elev	<b>3001</b> <b>18</b> <b>22</b>
--	------------------------	-----------------------------	---------------------------------------

RNAV (GPS) RWY 11  
SCAMMON BAY (SCM) (PACM)

RNP APCH - GPS.	MISSED APPROACH: Climb to 440, then climbing left turn to 2900 direct ZATEV then on track 252° to JTSKI and hold.
<div><div>▼</div><div>⚠</div><div>❄ -20°C</div></div>	<div>Circling NA south of Rwy 11-29. Circling Rwy 29 NA at night. VDP NA when using VAK/PAVA altimeter setting. When local altimeter setting not received, use VAK/PAVA altimeter setting and increase all MDAs 60 feet.</div>

AWOS-3P <b>118.425</b>	ANCHORAGE CENTER <b>124.5</b>	UNICOM <b>123.0 (CTAF) 0</b>
---------------------------	----------------------------------	---------------------------------



4 NM Holding Pattern		JTSKI	440	2900	ZATEV	tr 252°	JTSKI
6000 2900		285° 105°	105°	1600	3.00° TCH 40	1 NM to RWY 11	RWY 11
		8.7 NM	3.8 NM	1 NM			
CATEGORY	A	B	C	D			
LP MDA	380-1	362 (400-1)	NA				
LNAV MDA	1100-1¼ 1082 (1100-1¼)	1100-1½ 1082 (1100-1½)	NA				
CIRCLING	1100-1¼ 1078 (1100-1¼)	1100-1½ 1078 (1100-1½)	NA				