

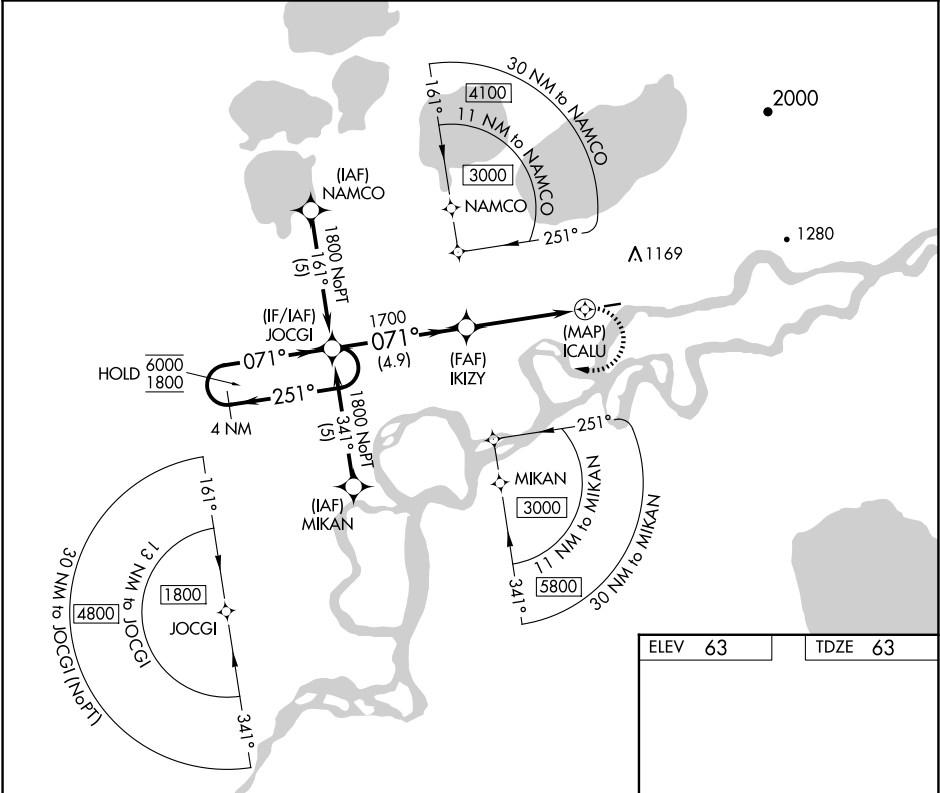
APP CRS	Rwy Idg	3198
071°	TDZE	63
	Apt Elev	63

RNAV (GPS) RWY 7

KALSKAG (KLG)(PALG)

RNP APCH - GPS.	MISSED APPROACH: Climbing right turn to 1800 direct JOCGI and hold.
<div><div>▼</div><div>Rwy 7 helicopter visibility reduction below 1 SM NA.</div></div> <div><div>⚠</div><div>Procedure NA at night. Circling NA north of Rwy 7-25.</div></div>	

AWOS-3P 119.025	ANCHORAGE CENTER 118.15 251.05	UNICOM 122.8 (CTAF) 0
--------------------	-----------------------------------	--------------------------



ELEV 63	TDZE 63
---------	---------

VGSI and descent angles not coincident (VGSI Angle 3.00/TCH 25).			
4 NM Holding Pattern		1800 JOCGI	
6000 ← 251°		IKIZY	
1800 → 071°		ICALU	
071°		3.00° TCH 40	
4.9 NM		4.3 NM	
0.7 NM			
CATEGORY	A	B	C D
LNAV MDA	560-1	497 (500-1)	NA
CIRCLING	560-1	700-1	NA
	497 (500-1)	637 (700-1)	

