

APP CRS	Rwy Idg	3300
093°	TDZE	272
	Apt Elev	274

RNAV (GPS) RWY 9

KOLIGANEK (JZZ) (PAJZ)

RNP APCH - GPS.

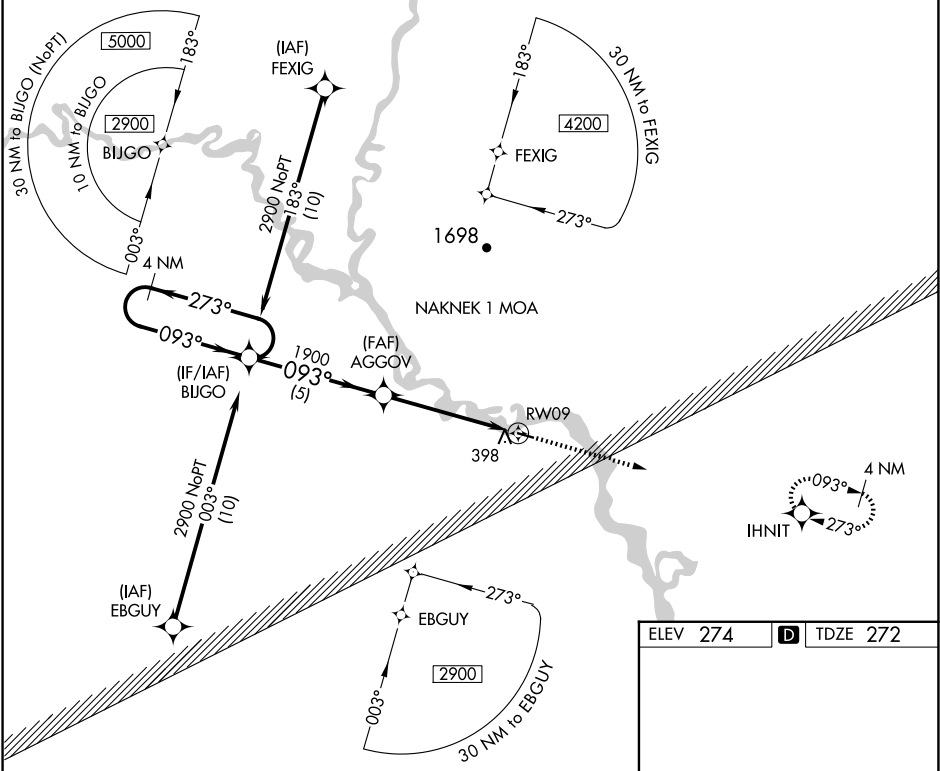
▼

When local altimeter setting not received, use new Stuyahok altimeter setting and increase all MDA 60 feet. Rwy 9 helicopter visibility reduction below 1 SM NA. Procedure NA at night.

MISSED APPROACH:

Climb to 3400 direct IHNIT and hold, continue climb-in-hold to 3400.

AWOS-3P 118.525	ANCHORAGE CENTER 132.75 282.35	DILLINGHAM RADIO 122.55	CTAF 122.9 0
--------------------	-----------------------------------	----------------------------	-----------------



4 NM Holding Pattern

2900 ← 273° / 093° →

BIJGO

AGGOV

1900

3.06° TCH 40

RW09

5 NM 5 NM

VGSI and descent angles not coincident (VGSI Angle 3.50/TCH 39).

3400 IHNIT

093°

1.0% UP

3300 X 75

CATEGORY	A	B	C	D
LNAV MDA	720-1	448 (500-1)	NA	
CIRCLING	720-1 446 (500-1)	740-1 466 (500-1)	NA	

MIRL Rwy 9-27 0

AK, 07 AUG 2025 to 02 OCT 2025

AK, 07 AUG 2025 to 02 OCT 2025