

STANLEY, NORTH DAKOTA

AL-9455 (FAA)

25023

WAAS CH <b>86248</b> <b>W28A</b>	APP CRS <b>282°</b>	Rwy Idg <b>3900</b> TDZE <b>2242</b> Apt Elev <b>2250</b>
--	------------------------	---

RNAV (GPS) RWY 28  
STANLEY MUNI (Ø8D)

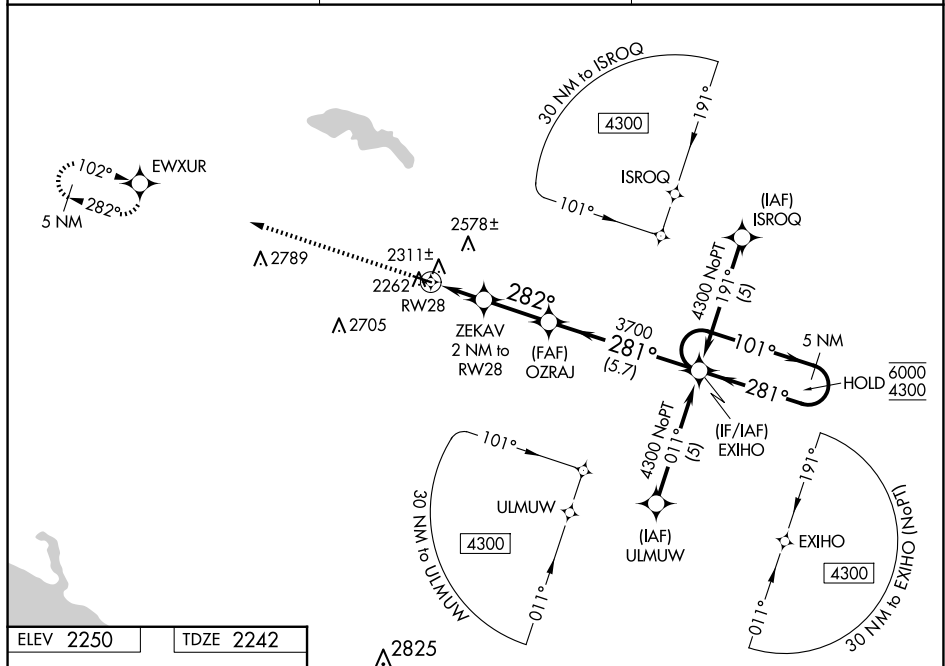
RNP APCH - GPS.

**T** For uncompensated Baro-VNAV systems, LNAV/VNAV  
**A** NA below -19°C or above 54°C. Rwy 28 helicopter  
visibility reduction below  $\frac{3}{4}$  SM NA.

**MISSED APPROACH:** Climb to 5000 direct EWXUR and hold, continue climb-in-hold to 5000.

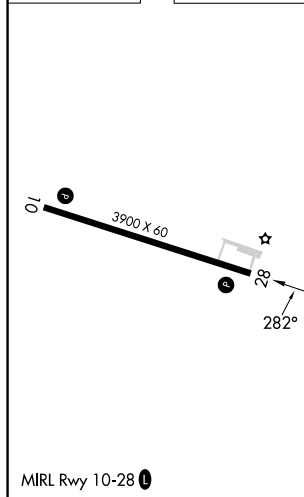
AWOS-3  
121.1

MINNEAPOLIS CENTER  
127.6 279.6

CTAF  
122.9 L

NC-1, 07 AUG 2025 to 04 SEP 2025

ELEV 2250		TDZE 2242
-----------	--	-----------



**EWXUR** 5000  
ZEKA V 2 NM to RW28  
OZRAJ 3700  
EXIHO 5 NM Holding Pattern  
GP 3.00° TCH 40

CATEGORY	A	B	C	D
LPV DA	2492-1	250 (300-1)		NA
LNAV/VNAV DA	2492-1	250 (300-1)		NA
LNAV MDA	2580-1	338 (400-1)		NA
<b>C</b> CIRCLING	2720-1 470 (500-1)	2940-1 690 (700-1)		NA

STANLEY, NORTH DAKOTA  
Amdt 3A 23JAN25

48°18'N-102°24'W

STANLEY MUNI (Ø8D)  
RNAV (GPS) RWY 28