

STANLEY, NORTH DAKOTA

AL-9455 (FAA)

24333

WAAS CH 87146 W10A	APP CRS 101°	Rwy Idg 3900 TDZE 2250 Apt Elev 2250
--	------------------------	---

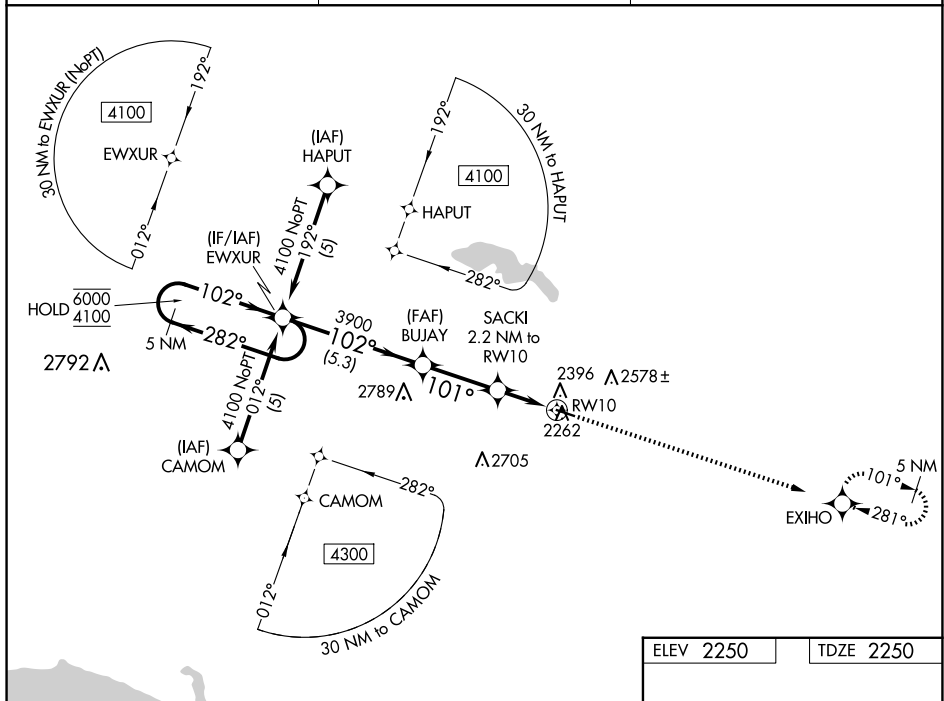
RNAV (GPS) RWY 10
STANLEY MUNI (Ø8D)

RNP APCH - GPS.

T For uncompensated Baro-VNAV systems, LNAV/VNAV NA below
A -19°C or above 54°C.

MISSED APPROACH: Climb to 4300 direct EXHO and hold.

AWOS-3 121.1	MINNEAPOLIS CENTER 127.6 279.6	CTAF 122.9 0
------------------------	--	------------------------



5 NM Holding Pattern

6000 ← 282°

4100 → 102°

GP 3.00° TCH 40

EWXUR

BUJAY

3900

102°

3900

101°

2860

SACKI

2.2 NM to RW10

1.2 NM to RW10

RW10

1.1 NM

1.2 NM

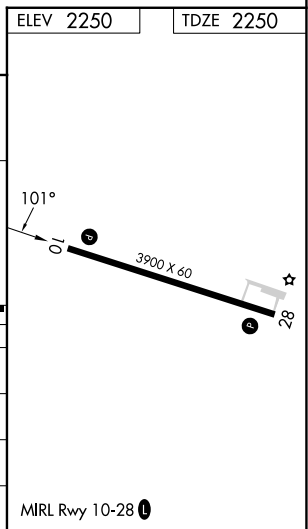
4300

EXIHO

5.3 NM

2.8 NM

CATEGORY	A	B	C	D
LPV DA	2450-1	200 (200-1)		NA
RNAV/ VNAV DA	2538-1	288 (300-1)		NA
RNAV MDA	2660-1	410 (500-1)		NA
CIRCLING	2720-1 470 (500-1)	2940-1 690 (700-1)		NA



STANLEY, NORTH DAKOTA
Orig 28NOV24

48°18'N-102°24'W

STANLEY MUNI (Ø8D)
RNAV (GPS) RWY 10

NC-1, 07 AUG 2025 to 04 SEP 2025