

WAAS CH 99630 W09A	APP CRS 100°	Rwy Idg TDZE 1777 Apt Elev 1779
--	------------------------	---

RNAV (GPS) RWY 9

LINTON MUNI (7L2)

RNP APCH - GPS.

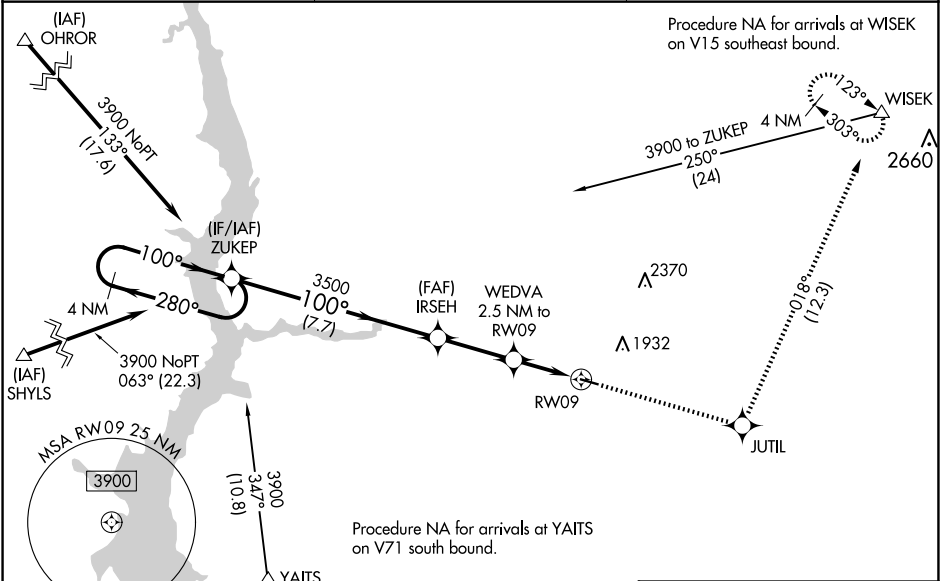
▼

▲

For uncompensated Baro-VNAV systems, LNAV/VNAV NA below -18°C or above 54°C. When local altimeter setting not received, use BIS altimeter setting and increase LPV DA to 2134 feet and all visibilities ¼ SM; increase LNAV/VNAV DA to 2198 and all visibilities ¼ SM. Increase all MDAs 120 feet and visibility LNAV Cat C ¼ SM and Circling Cat C ½ SM. Baro-VNAV and VDP NA when using BIS altimeter setting.

MISSED APPROACH: Climb to 4700 direct JUTIL and on track 018° to WISEK and hold.

ASOS-3 118.175	MINNEAPOLIS CENTER 135.25 256.7	CTAF 122.9
--------------------------	---	----------------------



VGSI and RNAV glidepath not coincident (VGSI Angle 3.00/TCH 27).		4700	JUTIL	tr 018°	WISEK
Holding Pattern					
4 NM					
ZUKEP					
3900					
280°					
100°					
100°					
3500					
IRSEH					
3500					
WEDVA					
2.5 NM to RW09					
1.2 NM to RW09					
RW09					
2600					
7.7 NM					
2.8 NM					
1.3					
1.2					
CATEGORY	A	B	C	D	
LPV DA	2027-1	250 (300-1)		NA	
LNAV/VNAV DA	2091-1	314 (400-1)		NA	
LNAV MDA	2160-1	383 (400-1)	2160-1 3/8 383 (400-1 3/8)	NA	
CIRCLING	2320-1 541 (600-1)	2400-1 621 (700-1)	2440-1 3/4 661 (700-1 3/4)	NA	