

WAAS CH 86630 W27A	APP CRS 280°	Rwy Idg TDZE 1779 Apt Elev 1779
----------------------------------------	------------------------	-----------------------------------------------------

RNAV (GPS) RWY 27

LINTON MUNI (7L2)

RNP APCH - GPS.

▼

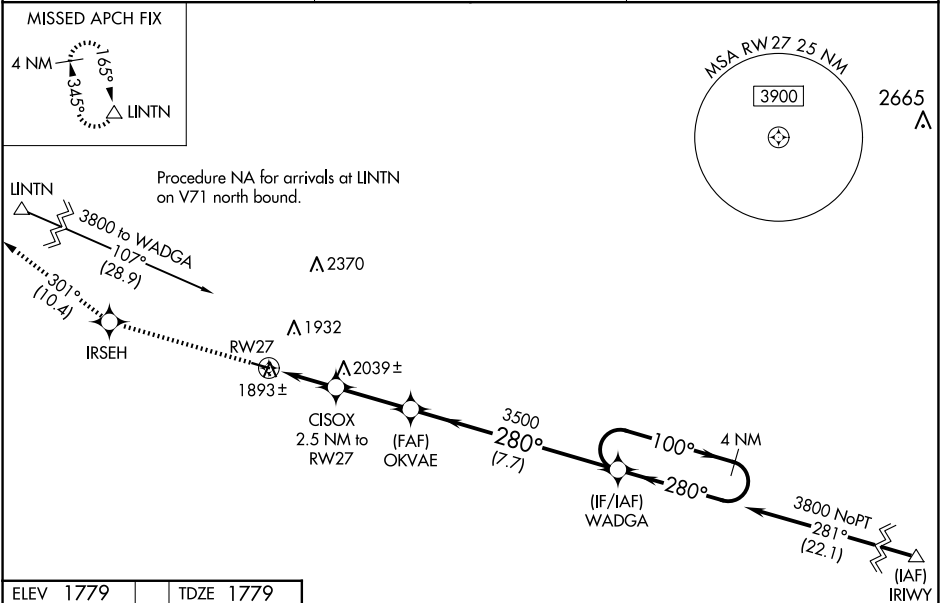
⚠

For uncompensated Baro-VNAV systems, LNAV/VNAV NA below -18°C or above 54°C.

Rwy 27 helicopter visibility reduction below ¾ SM NA. When local altimeter setting not received, use BIS altimeter setting and increase all DA 107 feet and visibility LPV and LNAV/VNAV all Cats ¼ SM; increase all MDA 120 feet and visibility LNAV Cat C ¼ SM. Baro-VNAV and VDP NA when using BIS altimeter setting.

MISSED APPROACH: Climb to 3600 direct IRSEH and on track 301° to LINTN and hold.

ASOS-3 118.175	MINNEAPOLIS CENTER 135.25 256.7	CTAF 122.9
--------------------------	-------------------------------------------	----------------------



ELEV 1779 TDZE 1779

3600

IRSEH

LINTN

↑

tr 301°

VGSI and RNAV glidepath not coincident (VGSI Angle 3.00/TCH 27).

WADGA

4 NM Holding Pattern

100° → 3800

← 280°

GP 3.00° TCH 40

CISOX 2.5 NM to RW27

OKVAE 3500

1.1 NM to RW27

2500

3500

280°

280°

1.1 1.4 2.8 7.7 NM

3700 X 60

0.4% UP

280°

CATEGORY	A	B	C	D
LPV DA	2029-1 250 (300-1)			NA
LNAV/VNAV DA	2043-1 264 (300-1)			NA
LNAV MDA	2160-1 381 (400-1)	2160-1½ 381 (400-1½)		NA

NC-1, 07 AUG 2025 to 04 SEP 2025

NC-1, 07 AUG 2025 to 04 SEP 2025