

WAAS CH 45630 W34A	APP CRS 340°	Rwy Ldg 3299 TDZE 892 Apt Elev 892
--	------------------------	---

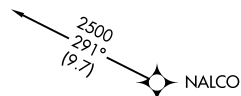
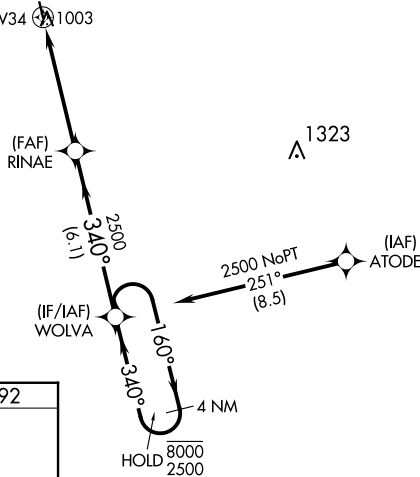
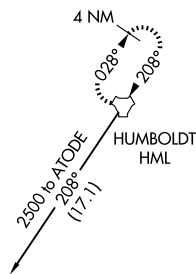
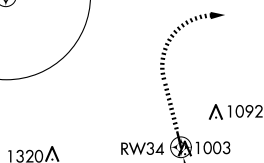
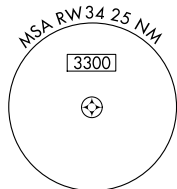
RNAV (GPS) RWY 34
CAVALIER MUNI (2C8)

RNP APCH-GPS.

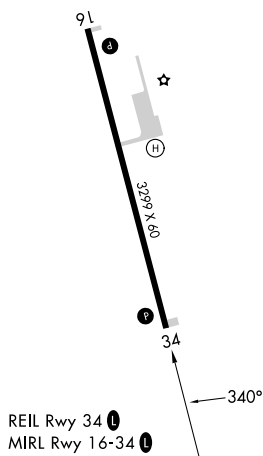
- T** Circling Rwy 16 NA at night.
A Rwy 34 helicopter visibility reduction below $\frac{3}{4}$ SM NA.

MISSED APPROACH: Climb to 1500 then climbing right turn to 3500 direct HML TACAN and hold.

AWOS-3 118.275	MINNEAPOLIS CENTER 132.15 269.6	UNICOM 122.8 (CTAF) 0
--------------------------	---	---------------------------------



ELEV 892		TDZE 892
----------	--	----------



VGS1 and RNAV glidepath not coincident
(VGS1 Angle 4.00/TCH 36).

1500 3500 HML

RW34 1.2 NM to RW34

RINAE 2500

WOLVA 4 NM Holding Pattern

340° 160° 8000 2500

GP 3.00° TCH 40

1.2 NM 3.7 NM 6.1 NM

CATEGORY	A	B	C	D
LPV DA	1157-1 265 (300-1)			NA
RNAV MDA	1440-1 548 (600-1)		1440-1½ 548 (600-1½)	NA
CIRCLING	1440-1 548 (600-1)		1440-1½ 548 (600-1½)	NA