

APP CRS	Rwy Idg	4001
003°	TDZE	98
	Apt Elev	98

RNAV (GPS) RWY 2

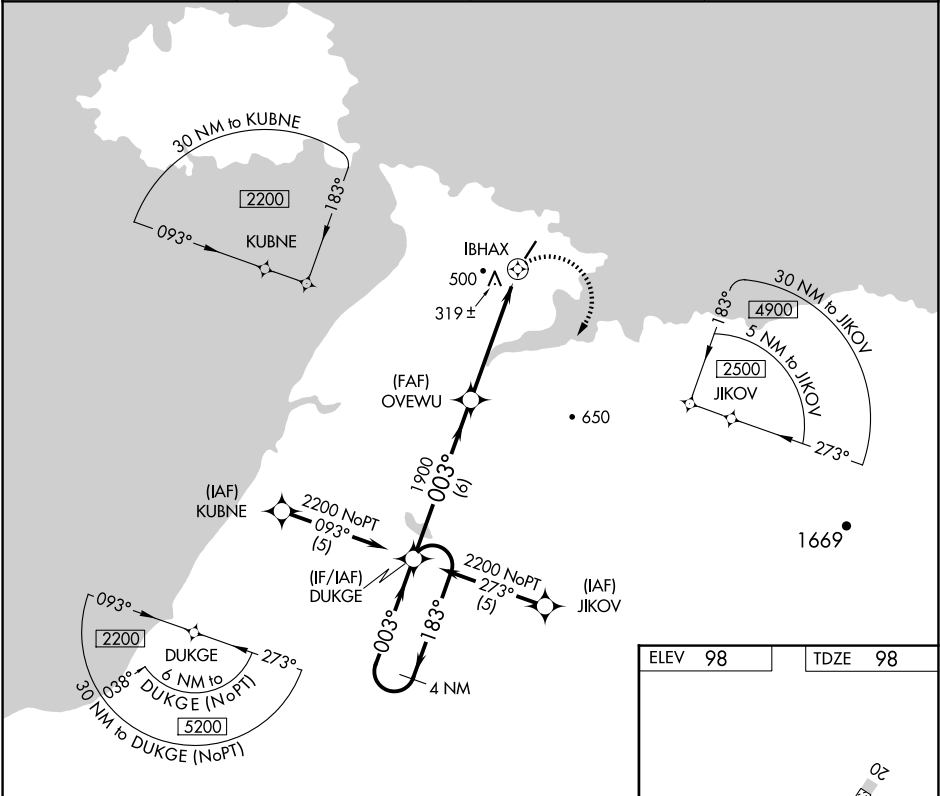
ST MICHAEL (SMK) (PAMK)

⚠

If local altimeter setting not received, use Unalakleet altimeter setting and increase all MDAs 120 feet. Circling NA west of Rwy 2-20. DME/DME RNP-0.3 NA.  
\* VDP NA with Unalakleet altimeter setting.

MISSED APPROACH:  
Climbing right turn to 2200  
direct DUKGE and hold.

AWOS-3P 119.275	ANCHORAGE CENTER 135.7	NOME RADIO 122.3	UNICOM 122.8 (CTAF) 0
--------------------	---------------------------	---------------------	--------------------------



4 NM Holding Pattern		DUKGE		2200 DUKGE	
2200 ← 183°		003° →		003°	
6 NM		4.1 NM		0.9 NM	
CATEGORY		A		B	
LNAV MDA		580-1		482 (500-1)	
CIRCLING		580-1		482 (500-1)	

