

PIKEVILLE, KENTUCKY

AL-9449 (FAA)

25219

WAAS CH 61240 W09A	APP CRS 094°	Rwy Ldg 4650 TDZE 1459 Apt Elev 1465
--	------------------------	---

APP CRS
094°

Rwy Ldg	4650
TDZE	1459
Apt Elev	1465

RNAV (GPS) RWY 9
PIKE COUNTY/HATCHER FLD (PBX)

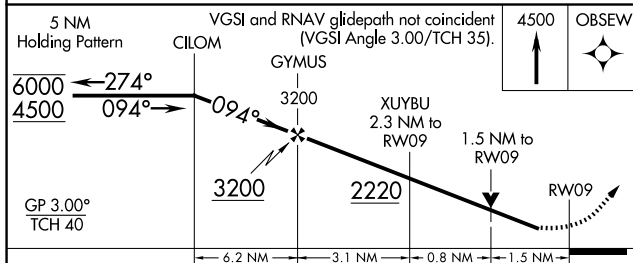
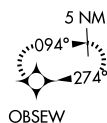
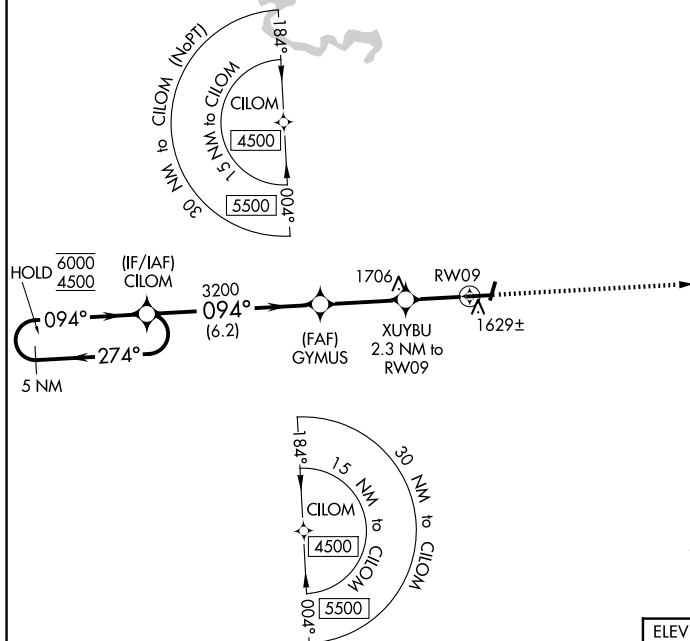
RNP APCH - GPS.

T For uncompensated Baro-VNAV systems, LNAV/VNAV NA below -17°C or
A above 54°C. Circling NA to Rwy 2 and 20. Helicopter visibility reduction
below $\frac{3}{4}$ SM NA.

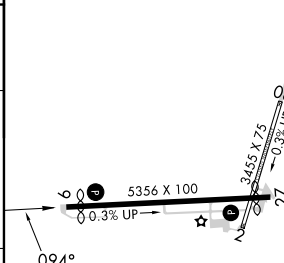
MISSED APPROACH: Climb to 4500 direct OBSEW and hold. Continue climb in hold to 4500.

AWOS-3PT
121.225

INDIANAPOLIS CENTER
126.575 257.85

UNICOM
122.8 (CTAF) **L**

CATEGORY		A	B	C	D
LPV	DA	1709-1		250 (300-1)	
LNAV/ VNAV	DA	1891-1½		432 (500-1½)	
LNAV	MDA	1960-1	501 (500-1)	1960-1¾	501 (500-1¾)
CIRCLING		2120-1 655 (700-1)	2180-1 715 (800-1)	2180-2 715 (800-2)	2460-3 995 (1000-3)



PIKEVILLE, KENTUCKY
Amdt 2A 07AUG25

37°34'N-82°34'W

PIKE COUNTY/HATCHER FLD (PBX)
RNAV (GPS) RWY 9

SE-1, 07 AUG 2025 to 04 SEP 2025