

WAAS
CH **86540**
W27A

APP CRS
274°

Rwy Ldg
TDZE **1463**
Apt Elev **1465**

RNAV (GPS) RWY 27

PIKE COUNTY/HATCHER FLD (PBX)

RNP APCH - GPS.

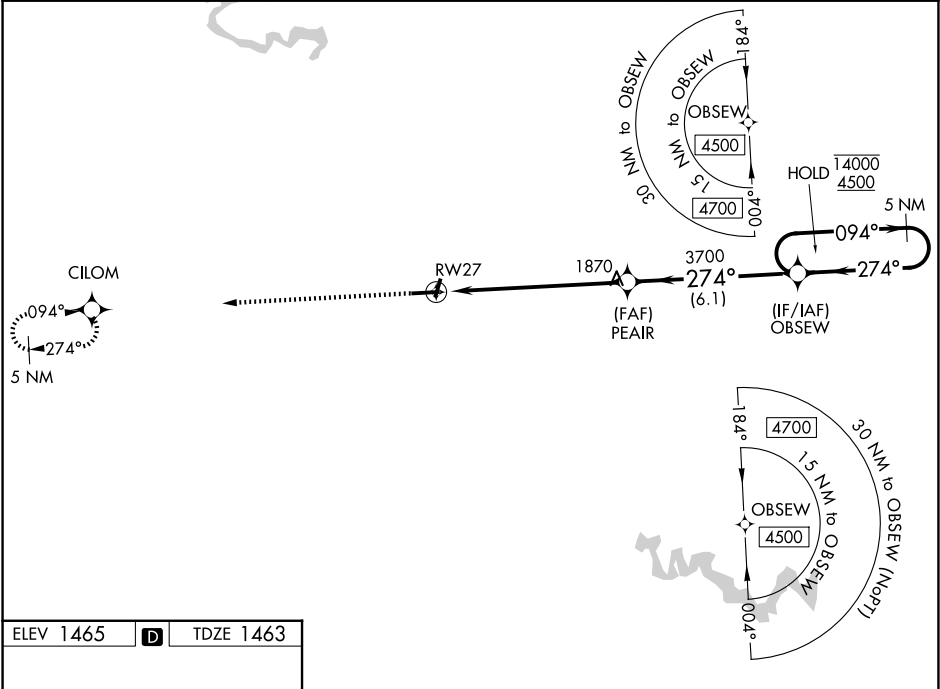
▼

▲

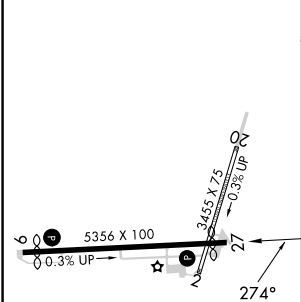
For uncompensated Baro-VNAV systems, LNAV/VNAV NA below -17°C or above 54°C. Rwy 27 helicopter visibility reduction below ¾ SM NA. Circling NA to Rws 2 and 20.

MISSED APPROACH: Climb to 4500 direct CILOM and hold, continue climb-in-hold to 4500.

AWOS-3PT 121.225	INDIANAPOLIS CENTER 126.575 257.85	UNICOM 122.8 (CTAF) 0
----------------------------	--	---------------------------------



ELEV 1465	D	TDZE 1463
-----------	----------	-----------



4500

↑

CILOM

PEAIR

3700

OBSEW

5 NM Holding Pattern

094° →

14000

← 274°

4500

1.9 NM to RW27

1.9

5 NM

6.1 NM

274°

3700

GP 3.00°

TCH 47

CATEGORY	A	B	C	D
LPV DA	1722-1		259 (300-1)	
LNAV/VNAV DA	2120-1 7/8		657 (700-1 7/8)	
LNAV MDA	2120-1	657 (700-1)	2120-1 7/8	657 (700-1 7/8)
CIRCLING	2120-1 655 (700-1)	2180-1 715 (800-1)	2180-2 715 (800-2)	2460-3 995 (1000-3)

HIRL Rwy 9-27 0
REIL Rws 9 and 27 0