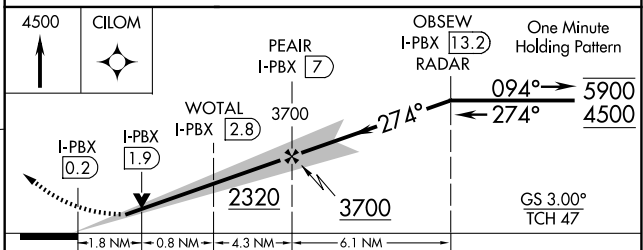
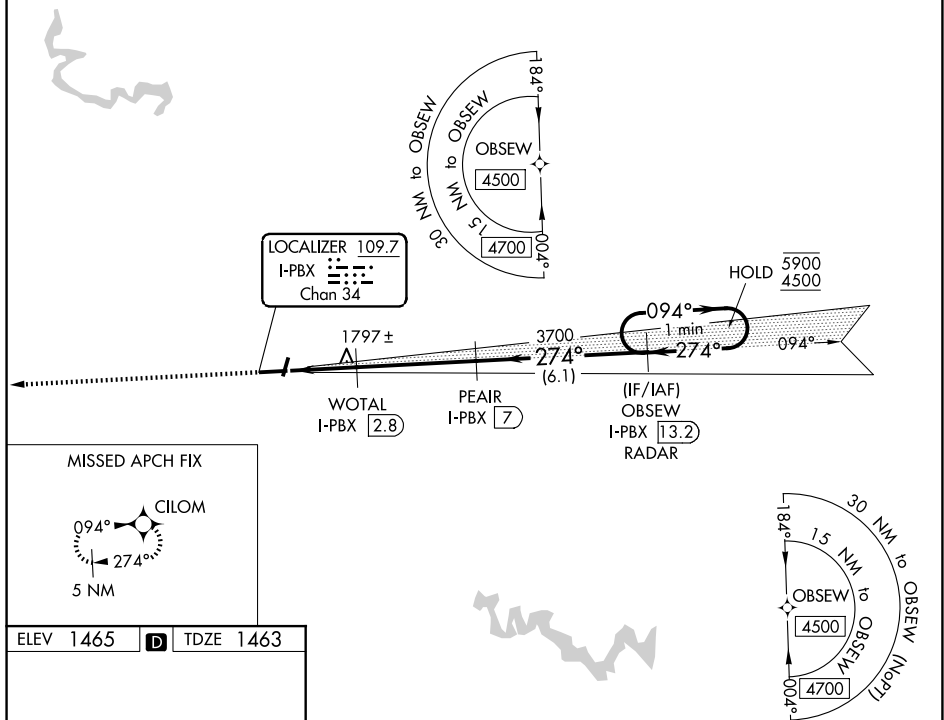


25219

ILS or LOC RWY 27
PIKE COUNTY/HATCHER FLD (PBX)

MISSED APPROACH: Climb to 4500 direct CILOM and hold, continue climb-in-hold to 4500.

UNICOM
122.8 (CTAF) **L**

CATEGORY	A	B	C	D
S-ILS 27	1722-1 259 (300-1)			
S-LOC 27	2080-1 617 (700-1)		2080-1 $\frac{3}{4}$ 617 (700-1 $\frac{3}{4}$)	
CIRCLING	2120-1 655 (700-1)	2180-1 715 (800-1)	2180-2 715 (800-2)	2460-3 995 (1000-3)

PIKE COUNTY/HATCHER FLD (PBX)
ILS or LOC RWY 27

37°34'N-82°34'W