

| | | | |
|--|------------------------|-----------------------------|---|
| WAAS CH 56244 W02A | APP CRS 022° | Rwy Idg TDZE Apt Elev | 3501 334 339 |
|--|------------------------|-----------------------------|---|

RNAV (GPS) RWY 2

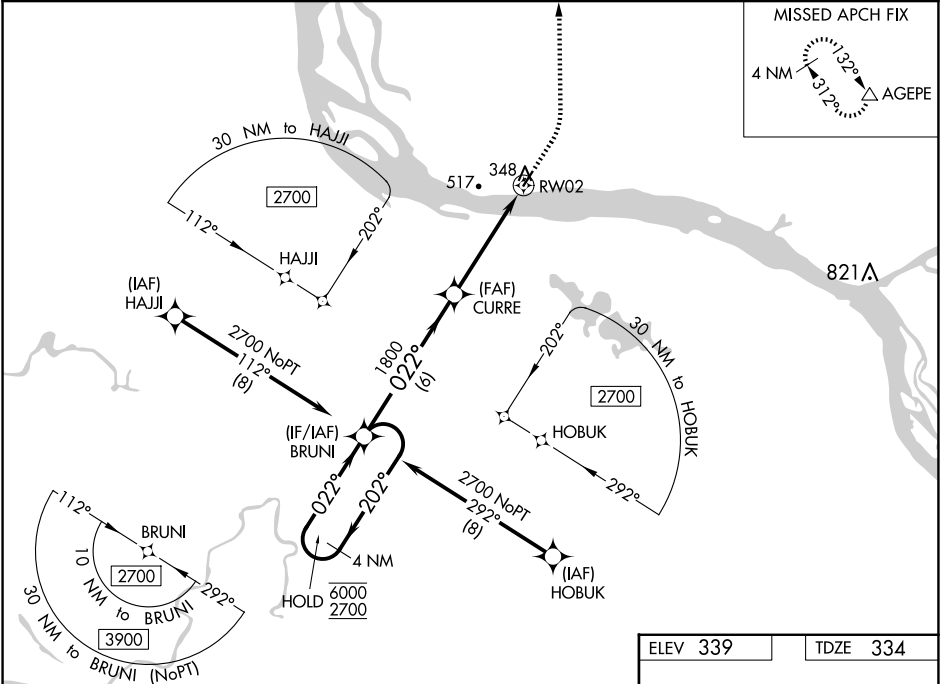
MOUNTAIN VILLAGE (MOU) (PAMO)

RNP APCH.

For uncompensated Baro-VNAV systems, LNAV/VNAV
NA below -25°C or above 54°C.

MISSED APPROACH: Climb to 760 then climbing left turn to
3000 direct AGEPE and hold, continue climb-in-hold to 3000.

| | | |
|--------------------------|----------------------------------|-----------------------|
| AWOS-3P 118.35 | ANCHORAGE CENTER 124.0 | CTAF 122.90 |
|--------------------------|----------------------------------|-----------------------|



VGSI and RNAV glidepath not coincident (VGSI Angle 3.00/TCH 25).

4 NM Holding Pattern

6000 ← 202°
2700 → 022°

GP 3.00°
TCH 30

CURVE

1800

1800

022°

0.9 NM to RW02

RW02

6 NM

3.7 NM

0.9

CATEGORY

A

B

C

D

LPV DA

534-1

200 (200-1)

LNAV/VNAV DA

584-1

250 (300-1)

LNAV MDA

600-1

266 (300-1)

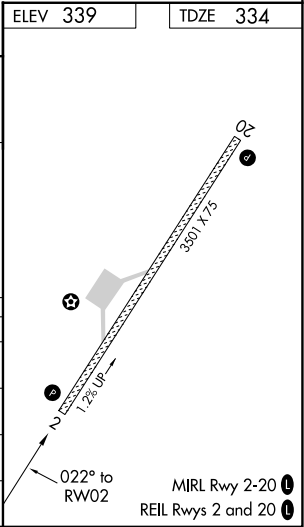
CIRCLING

700-1
361 (400-1)

840-1
501 (600-1)

840-1½
501 (600-1½)

900-2
561 (600-2)



AK, 07 AUG 2025 to 02 OCT 2025

AK, 07 AUG 2025 to 02 OCT 2025