

APP CRS
344°

Rwy Idg
TDZE
Apt Elev
953

3400
953
953

RNAV (GPS) RWY 33
WALHALLA MUNI (96D)

RNP APCH-GPS.

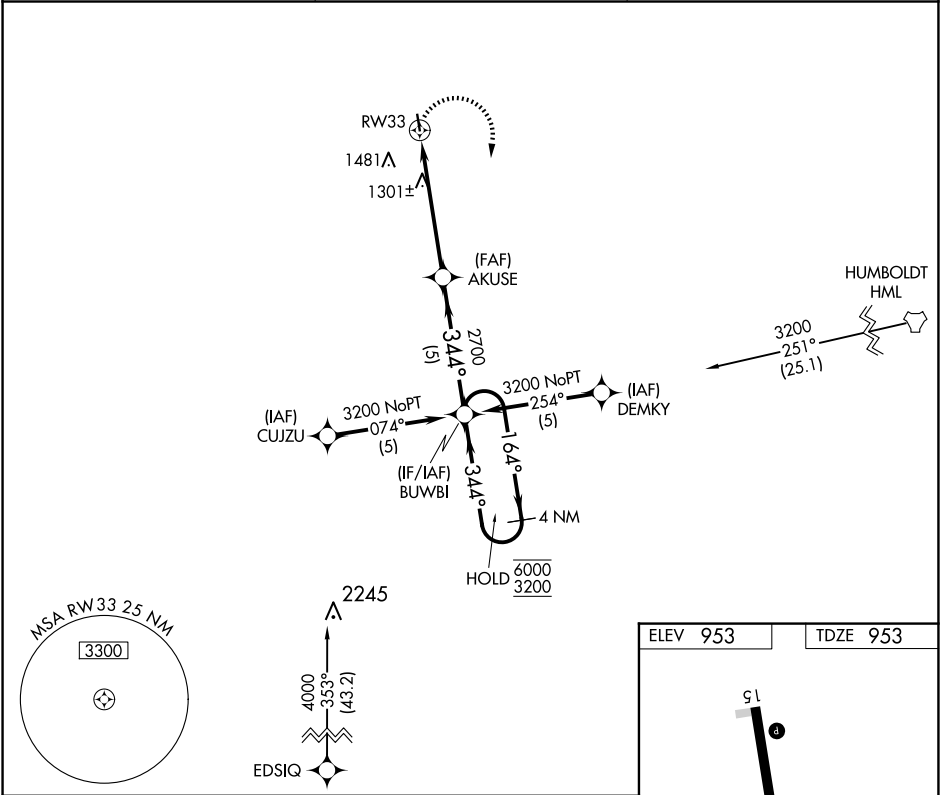
▼

▲

Rwy 33 helicopter visibility reduction below ¾ SM NA.
When local altimeter setting not received, use Hallock altimeter setting.

MISSED APPROACH: Climbing right turn to 3200 direct BUWBI and hold.

AWOS-3PT 118.175	MINNEAPOLIS CENTER 132.15 269.6	CTAF 122.9 0
----------------------------	---	------------------------



3200

BUWBI

VGSI and descent angles not coincident (VGSI Angle 3.00/TCH 28).

AKUSE

BUWBI

4 NM Holding Pattern

2.2 NM to RW33

3.00°

TCH 40

2700

164°

344°

6000

3200

CATEGORY

A

B

C

D

RNAV MDA

1680-1

727 (800-1)

NA

NA

CIRCLING

1680-1

727 (800-1)

1960-1½

1007 (1100-1½)

NA

MIRL Rwy 15-33 0

344° to RW33