

APP CRS

340°

Rwy Idg

3000

TDZE

1295

Apt Elev

1295

RNAV (GPS) RWY 34

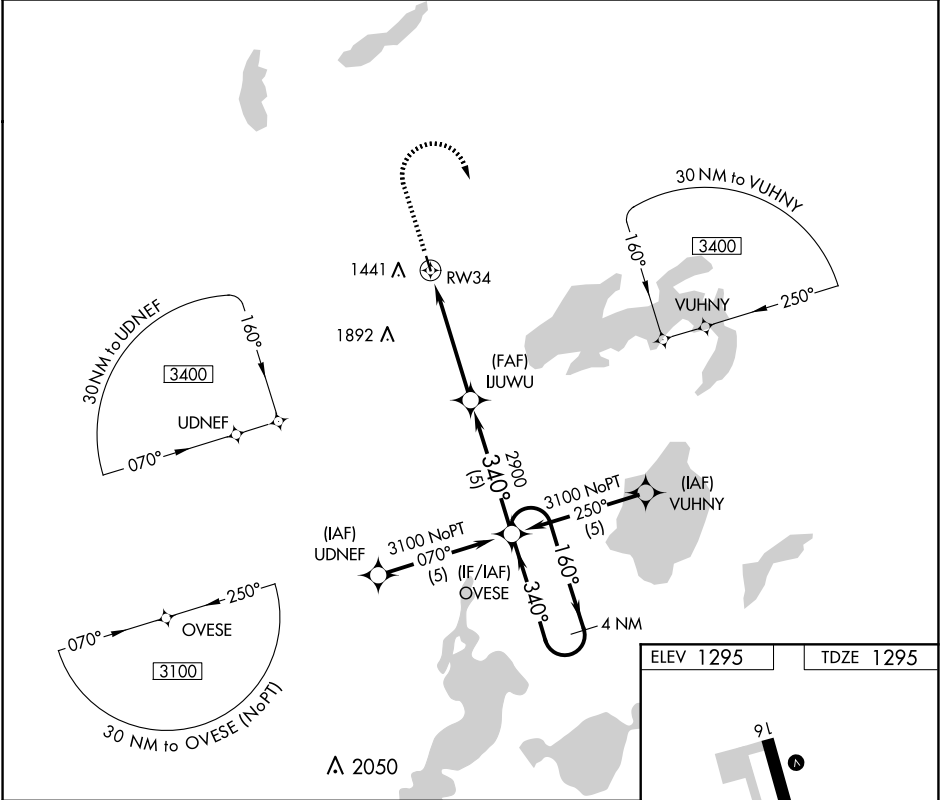
PINE RIVER RGNL (PWC)

NA

GPS or RNP-0.3 required. DME/DME RNP-0.3 NA.

MISSED APPROACH: Climb to 2100 then climbing right turn to 3100 direct OVESE WP and hold.

| | | |
|-------------------|------------------------------------|---------------|
| AWOS-3 118.525 | MINNEAPOLIS CENTER 118.05 239.0 | CTAF 122.9 |
|-------------------|------------------------------------|---------------|



2100

3100

OVESE

1.2 NM to RW34

≤ 3.04°

TCH 38

1.2

3.7 NM

5 NM

RW34

2900

340°

160°

3100

4 NM Holding Pattern

| CATEGORY | A | B | C | D |
|-----------|-----------------------|-----------------------|-------------------------|----|
| LNNAV MDA | 1700-1 | 405 (500-1) | 1700-1¼ 405 (500-1¼) | NA |
| CIRCLING | 1760-1 465 (500-1) | 1840-1 545 (600-1) | 1840-1½ 545 (600-1½) | NA |

ELEV 1295

TDZE 1295

91

3000 X 75

34

340° to RW34

MIRL Rwy 16-34

REIL Rwy 16 and 34